

# **AA** ABSOLUTE ANGUS

2024 AUTUMN

## **BULL SALE**

BAMAWM/ECHUCA

THURSDAY 4TH APRIL | 1PM

**43 BULLS**



[ABSOLUTEANGUS.COM.AU](https://www.absoluteangus.com.au)



# QUALITY GENETICS BREED QUALITY BULLS



**LOT 4** ABSOLUTE T939



**LOT 16** ABSOLUTE LEONARDO T610



**LOT 28** ABSOLUTE NEWGROUND T698



**LOT 31** ABSOLUTE PRIME T652



**LOT 32** ABSOLUTE PACIFIC T580



**LOT 34** ABSOLUTE RIMFIRE T965

# ABSOLUTE ANGUS

BAMAWM/ECHUCA

## BULL SALE

THURSDAY 4TH APRIL 2024 | 1PM

ECHUCA & DISTRICT LIVESTOCK EXCHANGE  
& AUCTIONSPLUS | 1PM

43 BULLS

## ABSOLUTE ANGUS

**ANTHONY PISA**  
0447 000 758

**DAMIAN SUTTON**  
0419 627 761

E: ANTHONY@ABSOLUTEANGUS.COM.AU



Trent Storm 0428 262 991  
Tim Woodham 0436 015 115



David Setches  
0409 443 473

rma network Accredited Member



**AuctionsPlus**

Unable to join us in Trafalgar South on Sale Day?  
Watch, listen & purchase online.  
Register on AuctionsPlus.com.au



## PRE-SALE INSPECTION

The bulls are available for pre-sale inspection from 11am on sale day. Prior inspections are welcome by private appointment.

## AUCTIONSPLUS

The auction is fully interfaced live with AuctionsPlus for those interested buyers who can't make the sale. Please register your interest early to avoid disappointment.

## HEALTH OF SALE CATTLE

All bulls offered in this Sale have been vaccinated with Ultravac 7 in 1, Vibriosis, Pesti Guard (BVD), and drenched prior to the sale.

## ABSOLUTE ANGUS GUARANTEE

All sale bulls have been DNA Tested and Sire Verified, and independently structurally assessed by Liam Cardile, Beef Excel, to maximize the quality of stock on offer at the sale.

All bulls semen tested by Ian Moreland.

Genomics information on all sale bulls available at the sale.

To the best of our knowledge the bulls offered are in sound working order as at the time of sale. If a bull becomes infertile or breaks down due to reasons other than injury or misadventure, at any time in the next 12 months, Absolute Angus will:

1. Provide you with a mutually agreeable replacement if available, or
2. We will issue a refund equal to the purchase value minus any salvage value, or
3. Issue you with a credit equal to purchase price minus salvage value to purchase an any animal from Absolute Angus within a 2-year time frame.

Please note in some cases a veterinary report may be requested. Normal care and good husbandry practices must be observed as a replacement, or a credit, is not available if a bull is simply injured or dies for any other reason. The guarantee is for the value of the bull without interest, costs, or damages.

## INSURANCE

We recommend you insure animals against injury, for transit and potential loss of use in the first joining season. Please ensure bulls are insured at the fall of the hammer as our insurance does not cover injury of bulls in transit. An insurance service will be available on sale day.

## SAFETY

All sale bulls are generally quiet to handle under normal conditions however care must be taken during sale day as crowd pressure may change their behaviour. Please use caution and be alert. All visitors enter the cattle display yards at their own risk. Children are not permitted to enter the bull display yards.

## DELIVERY OF SALE BULLS

Absolute Angus provide a free delivery service within a 100-kilometre radius from the sale location. Further travel distances can be arranged by negotiation. Please fill out your delivery and insurance instructions.

## OUTSIDE AGENT REBATE

A 2% rebate is paid to outside agents, introducing a buyer, and settling within 7 days.

## DISCLAIMER

Absolute Angus has taken great care in ensuring the information provided in this catalogue is accurate however we take no responsibility for the accuracy and/or interpretation of the information in this sale catalogue.

## WELCOME TO THE INAUGURAL ECHUCA/BAMAWM AUTUMN 2024 BULL SALE

A good season at the Echuca stud & this is reflected in the group of bulls on offer at our inaugural sale. The bulls have taken off well and are looking magnificent.

With more positivity in the market with the stronger prices we see producers focused on buying bulls with adaptability.

At Absolute Angus we breed for positive Estimated Breeding Values overall – values that support the phenotype of the animal and allow them to perform wherever they go, focusing on weight gain on grass.

All our bulls are good on grass, being all grassfed, with sire lines such as Landfall Leonardo P145, a bull that has great grassfed traits.

Each client has a different trait they come for – power, birth, growth, fat cover – so our focus is on the structure and the phenotype of the animal first.

We are confident clients can find the bull that suits their needs in this year's catalogue – be it for breeding weaners, replacement heifers or finished cattle.

The main sire lines represented in this offering are Landfall New Ground N90, Milwillah Rimfire R1023 Sterling Pacific, Coleman Bravo 6313, Landfall Q543 and Baldrige 38 Special – a very strong line up of leading bred sires to choose from.

We believe this year's group of bulls brings together the last 12 years of our breeding program and we have carefully selected our females and joining sires that are of the utmost importance to the Angus breed.

Still leading the way with quality genetics – our focus leans towards fertility, birth, structure, docility and phenotype as the main drivers; but just as important we focus on growth, carcass, EMA, fats and IMF.

This enables clients to choose what they are looking for to introduce to their breeding programs for consistent profitability with their herd.

Buyers looking to improve their herd that represent leading traits will have a range of top-quality bulls to choose from.

A big thank you to Alex Scott & Staff, Nutrien Livestock, Outriders Media, livestock professionals, family and friends for your continuing and ongoing support.

Regards,

*Absolute Angus Team*



**RS**

**LANDFALL NEW GROUND N90<sup>PV</sup>**

**TFAN90**

DOB: 16/07/2017

Registration Status: **HBR**

Mating Type: **AI**

Genetic Status: **AMF,CAF,DDF,NHF,DWF,MAF,MHF,OHF,OSF,RGF**

MYTTY IN FOCUS\*  
A A R TEN X 7008 S A<sup>SV</sup>  
A A R LADY KELTON 5551\*

SCHURRTOP REALITY X723\*  
MATAURI REALITY 839\*  
MATAURI 06663\*

**Sire: USA17262835 V A R DISCOVERY 2240<sup>PV</sup>**

**Dam: TFAL88 LANDFALL ELSA L88<sup>PV</sup>**

SITZ UPWARD 307R<sup>SV</sup>  
DEER VALLEY RITA 0308\*  
G A R OBJECTIVE 2345\*

TE MANIA EMPEROR E343<sup>PV</sup>  
LANDFALL ELSA J139\*  
LANDFALL E103<sup>SV</sup>

**Mid March 2024 TransTasman Angus Cattle Evaluation**

TACE	Dir	Dtrs	GL	BW	200 W	400 W	600 W	MCW	Milk	SS	Doc
<b>EBV</b>	<b>-0.4</b>	<b>+1.9</b>	<b>-5.8</b>	<b>+3.8</b>	<b>+56</b>	<b>+111</b>	<b>+142</b>	<b>+128</b>	<b>+11</b>	<b>+6.6</b>	<b>+34</b>
ACC	94%	84%	99%	99%	99%	99%	99%	97%	96%	98%	99%
Perc	72	63	28	45	28	8	11	15	92	1	10

TACE	D t C	CWT	EMA	Rib	Rump	RBY	IMF	NFI-F	Claw	Angle	Leg
<b>EBV</b>	<b>-2.5</b>	<b>+67</b>	<b>+12.3</b>	<b>+2.3</b>	<b>+2.1</b>	<b>+0.6</b>	<b>+2.5</b>	<b>+0.90</b>	<b>+0.84</b>	<b>+0.82</b>	<b>+0.96</b>
ACC	69%	93%	92%	93%	93%	90%	91%	78%	99%	99%	98%
Perc	90	50	5	9	14	41	42	96	49	16	28

**Selection Indexes**

\$A	\$A-L
<b>\$212</b>	<b>\$380</b>
40	26

**Traits Observed:**

GL,CE,BWT,  
200WT,400WT,600WT,SC,  
Scan(EMA,Rib,Rump,IMF),  
Genomics

Statistics: Number of Herds: 165, Prog Analysed: 4058, Genomic Prog: 2876

**RS**

**MILWILLAH RIMFIRE R1023<sup>PV</sup>**

**NJWR1023**

DOB: 04/06/2020

Registration Status: **HBR**

Mating Type: **ET**

Genetic Status: **AMF,CAF,DDF,NHF,DWF,MAF,MHF,OHF,OSF,RGF**

D R SIERRA CUT 7404\*  
TEHAMA REVERE\*  
TEHAMA ELITE BLACKBIRD T003\*

SCHURRTOP REALITY X723\*  
MATAURI REALITY 839\*  
MATAURI 06663\*

**Sire: USA18159093 S POWERPOINT WS 5503<sup>PV</sup>**

**Dam: NJWK26 MILWILLAH BARUNAH K26<sup>SV</sup>**

S SUMMIT 956\*  
S QUEEN ESSA 248\*  
S QUEEN ESSA 0131\*

MILWILLAH BANDO B3<sup>SV</sup>  
MILWILLAH BARUNAH F2\*  
MILWILLAH BARUNAH A43\*

**Mid March 2024 TransTasman Angus Cattle Evaluation**

TACE	Dir	Dtrs	GL	BW	200 W	400 W	600 W	MCW	Milk	SS	Doc
<b>EBV</b>	<b>+5.0</b>	<b>+6.3</b>	<b>-4.9</b>	<b>+3.5</b>	<b>+53</b>	<b>+91</b>	<b>+113</b>	<b>+108</b>	<b>+15</b>	<b>+0.8</b>	<b>+12</b>
ACC	76%	63%	84%	94%	92%	88%	87%	83%	78%	81%	78%
Perc	25	17	42	38	41	53	63	40	70	90	84

TACE	D t C	CWT	EMA	Rib	Rump	RBY	IMF	NFI-F	Claw	Angle	Leg
<b>EBV</b>	<b>-5.6</b>	<b>+62</b>	<b>+9.6</b>	<b>+3.1</b>	<b>+4.5</b>	<b>-0.1</b>	<b>+2.6</b>	<b>+0.40</b>	<b>+0.68</b>	<b>+0.82</b>	<b>+0.98</b>
ACC	47%	78%	75%	76%	76%	70%	78%	64%	75%	75%	67%
Perc	27	66	17	4	3	81	39	70	18	16	33

**Selection Indexes**

\$A	\$A-L
<b>\$235</b>	<b>\$401</b>
17	13

**Traits Observed:**

BWT,200WT(x2),400WT,  
Scan(EMA,Rib,Rump,  
IMF),Genomics

Statistics: Number of Herds: 2, Prog Analysed: 85, Genomic Prog: 71

**RS**

**TE MANIA PRIME P586<sup>PV</sup>**

**VTMP586**

DOB: 08/08/2018

Registration Status: **HBR**

Mating Type: **ET**

Genetic Status: **AMFU,CAFU,DDFU,NHFU**

C R A BEXTOR 872 5205 608\*  
G A R PROPHET<sup>SV</sup>  
G A R OBJECTIVE 1885\*

TE MANIA BERKLEY B1<sup>PV</sup>  
TE MANIA EMPEROR E343<sup>PV</sup>  
TE MANIA LOWAN Z74<sup>PV</sup>

**Sire: VTMK138 TE MANIA KIRBY K138<sup>PV</sup>**

**Dam: VTMH320 TE MANIA DANDLOO H320<sup>PV</sup>**

TE MANIA FORGO F893<sup>PV</sup>  
TE MANIA BEEAC H17<sup>SV</sup>  
TE MANIA BEEAC F709\*

TE MANIA UNLIMITED U3271\*  
TE MANIA DANDLOO B76<sup>PV</sup>  
TE MANIA DANDLOO X330<sup>SV</sup>

**Mid March 2024 TransTasman Angus Cattle Evaluation**

TACE	Dir	Dtrs	GL	BW	200 W	400 W	600 W	MCW	Milk	SS	Doc
<b>EBV</b>	<b>+4.1</b>	<b>+6.6</b>	<b>-3.0</b>	<b>+3.5</b>	<b>+50</b>	<b>+91</b>	<b>+117</b>	<b>+87</b>	<b>+19</b>	<b>+4.2</b>	<b>+7</b>
ACC	71%	64%	84%	87%	86%	85%	85%	83%	79%	82%	81%
Perc	33	15	72	38	57	55	55	73	32	5	93

TACE	D t C	CWT	EMA	Rib	Rump	RBY	IMF	NFI-F	Claw	Angle	Leg
<b>EBV</b>	<b>-8.1</b>	<b>+52</b>	<b>-1.2</b>	<b>+2.5</b>	<b>+4.4</b>	<b>-2.2</b>	<b>+7.4</b>	<b>+0.53</b>	<b>+0.68</b>	<b>+0.56</b>	<b>+0.82</b>
ACC	56%	78%	77%	76%	78%	72%	79%	69%	80%	81%	77%
Perc	3	89	99	7	3	99	1	81	18	1	5

**Selection Indexes**

\$A	\$A-L
<b>\$248</b>	<b>\$410</b>
9	9

**Traits Observed:**

BWT,200WT,400WT,  
600WT,SC,Scan(EMA,Rib,  
Rump,IMF),DOC,Structure  
(Claw Set x 2, Foot Angle x  
2),Genomics

Statistics: Number of Herds: 1, Prog Analysed: 17, Genomic Prog: 11

**RS**

**LANDFALL Q543<sup>SV</sup>**

**TFAQ543**

DOB: 13/08/2019

Registration Status: **HBR**

Mating Type: **Natural**

Genetic Status: **AMFU,CAFU,DDFU,NHFU**

A A R TEN X 7008 S A<sup>SV</sup>  
V A R DISCOVERY 2240<sup>PV</sup>  
DEER VALLEY RITA 0308<sup>#</sup>

BOOROOMOOKA UNDERTAKEN Y145<sup>PV</sup>  
RENNYLEA EDMUND E11<sup>PV</sup>  
LAWSONS HENRY VIII Y5<sup>SV</sup>

**Sire: TFAN241 LANDFALL DISCOVERY N241<sup>SV</sup>**

**Dam: TFAN1047 LANDFALL FEARLESS N1047<sup>PV</sup>**

LANDFALL HANK H68<sup>PV</sup>  
LANDFALL ELSA L53<sup>#</sup>  
LANDFALL ELSA J775<sup>#</sup>

KM BROKEN BOW 002<sup>PV</sup>  
LANDFALL EMIT K204<sup>PV</sup>  
LANDFALL FEARLESS D58<sup>SV</sup>

**Mid March 2024 TransTasman Angus Cattle Evaluation**

TACE	Dir	Dtrs	GL	BW	200 W	400 W	600 W	MCW	Milk	SS	Doc
<b>EBV</b>	<b>+1.5</b>	<b>-5.1</b>	<b>-5.1</b>	<b>+3.7</b>	<b>+48</b>	<b>+88</b>	<b>+120</b>	<b>+94</b>	<b>+9</b>	<b>+1.5</b>	<b>+20</b>
ACC	70%	60%	82%	86%	84%	82%	83%	80%	75%	79%	76%
Perc	58	97	39	43	66	64	47	64	96	73	53

TACE	D t C	CWT	EMA	Rib	Rump	RBY	IMF	NFI-F	Claw	Angle	Leg
<b>EBV</b>	<b>-4.7</b>	<b>+76</b>	<b>+13.6</b>	<b>+0.6</b>	<b>-1.5</b>	<b>+1.1</b>	<b>+2.5</b>	<b>+0.61</b>	<b>+0.94</b>	<b>+1.00</b>	<b>+0.88</b>
ACC	46%	72%	71%	71%	72%	63%	75%	63%	63%	63%	61%
Perc	47	25	3	33	70	16	42	86	70	56	11

**Selection Indexes**

\$A	\$A-L
<b>\$214</b>	<b>\$345</b>
38	54

**Traits Observed:**  
CE,BWT,200WT,400WT,  
600WT,SC,Scan(EMA,Rib,  
Rump,IMF),DOC,Genomics

Statistics: Number of Herds: 1, Prog Analysed: 9, Genomic Prog: 6

**RS**

**ABSOLUTE PURE MAGIC P124<sup>PV</sup>**

**HRWP124**

DOB: 10/09/2018

Registration Status: **HBR**

Mating Type: **ET**

Genetic Status: **AMFU,CAFU,DDFU,NHFU**

LEACHMAN RIGHT TIME 338-5605<sup>#</sup>  
WMR TIMELESS 458<sup>#</sup>  
WMR BLACKCAP 521<sup>#</sup>

TC FRANKLIN 619<sup>#</sup>  
WATTLETOP FRANKLIN G188<sup>SV</sup>  
WATTLETOP BARUNAH E295<sup>DV</sup>

**Sire: USA17526276 GDAR REGULATOR 364<sup>PV</sup>**

**Dam: NWPJ397 WATTLETOP J397<sup>SV</sup>**

GDAR GAME DAY 449<sup>#</sup>  
GDAR BLACKCAP LADY 071<sup>#</sup>  
GDAR BLACKCAP LADY 717<sup>#</sup>

TE MANIA AFRICA A217<sup>PV</sup>  
WATTLETOP DANDLOO G30<sup>#</sup>  
WATTLETOP DANDLOO E216<sup>SV</sup>

**Mid March 2024 TransTasman Angus Cattle Evaluation**

TACE	Dir	Dtrs	GL	BW	200 W	400 W	600 W	MCW	Milk	SS	Doc
<b>EBV</b>	<b>-5.8</b>	<b>+3.1</b>	<b>-4.1</b>	<b>+5.4</b>	<b>+58</b>	<b>+94</b>	<b>+126</b>	<b>+102</b>	<b>+18</b>	<b>+0.9</b>	<b>+25</b>
ACC	69%	59%	83%	84%	84%	82%	82%	80%	76%	80%	75%
Perc	93	51	55	80	19	43	35	51	42	88	30

TACE	D t C	CWT	EMA	Rib	Rump	RBY	IMF	NFI-F	Claw	Angle	Leg
<b>EBV</b>	<b>-4.7</b>	<b>+70</b>	<b>+0.4</b>	<b>-0.4</b>	<b>+0.3</b>	<b>+0.1</b>	<b>+0.3</b>	<b>-1.01</b>	<b>+0.84</b>	<b>+0.94</b>	<b>+1.14</b>
ACC	48%	72%	72%	72%	72%	65%	75%	62%	71%	71%	67%
Perc	47	42	97	56	38	71	93	1	49	41	81

**Selection Indexes**

\$A	\$A-L
<b>\$174</b>	<b>\$297</b>
80	84

**Traits Observed:**  
BWT,200WT,SC,  
Scan(EMA,Rib,Rump,  
IMF),Genomics

Statistics: Number of Herds: 1, Prog Analysed: 3, Genomic Prog: 2

**RS**

**BALDRIDGE 38 SPECIAL<sup>PV</sup>**

**USA18229487**

DOB: 13/01/2015

Registration Status: **HBR**

Mating Type: **Natural**

Genetic Status: **AMF,CAF,DDF,NHF,MAF,OSF,RGF**

BASIN FRANCHISE P142<sup>#</sup>  
EF COMPLEMENT 8088<sup>PV</sup>  
EF EVERELDA ENTENSE 6117<sup>#</sup>

SITZ UPWARD 307R<sup>SV</sup>  
STYLES UPGRADE J59<sup>#</sup>  
PLAINVIEW LASSIE 71B<sup>#</sup>

**Sire: USA17082311 EF COMMANDO 1366<sup>PV</sup>**

**Dam: USA17149410 BALDRIDGE ISABEL Y69<sup>#</sup>**

B/R AMBUSH 28<sup>#</sup>  
RIVERBEND YOUNG LUCY W1470<sup>#</sup>  
RIVERBEND YOUNG LUCY T1080<sup>#</sup>

BALDRIDGE KABOOM K243 KCF<sup>#</sup>  
BALDRIDGE ISABEL T935<sup>#</sup>  
BALDRIDGE ISABEL P4527<sup>#</sup>

**Mid March 2024 TransTasman Angus Cattle Evaluation**

TACE	Dir	Dtrs	GL	BW	200 W	400 W	600 W	MCW	Milk	SS	Doc
<b>EBV</b>	<b>+7.0</b>	<b>+3.3</b>	<b>-5.0</b>	<b>+2.5</b>	<b>+63</b>	<b>+108</b>	<b>+142</b>	<b>+110</b>	<b>+22</b>	<b>+2.5</b>	<b>+14</b>
ACC	92%	79%	99%	99%	98%	98%	98%	96%	95%	98%	98%
Perc	11	48	40	19	8	12	10	36	16	36	76

TACE	D t C	CWT	EMA	Rib	Rump	RBY	IMF	NFI-F	Claw	Angle	Leg
<b>EBV</b>	<b>-5.2</b>	<b>+73</b>	<b>+7.0</b>	<b>+1.3</b>	<b>-0.8</b>	<b>-0.3</b>	<b>+3.0</b>	<b>+0.27</b>	<b>+0.62</b>	<b>+0.78</b>	<b>+0.88</b>
ACC	64%	92%	91%	90%	89%	85%	90%	75%	99%	99%	95%
Perc	35	33	41	20	58	87	30	56	11	11	11

**Selection Indexes**

\$A	\$A-L
<b>\$247</b>	<b>\$418</b>
10	7

**Traits Observed:** Genomics

Statistics: Number of Herds: 120, Prog Analysed: 2063, Genomic Prog: 1133

**RS**

**CLUNIE RANGE QUEENSLANDER Q311<sup>PV</sup>**

**NBHQ311**

DOB: 31/05/2019

Registration Status: **HBR**

Mating Type: **ET**

Genetic Status: **AMF,CAF,DDF,NHF,DWF,MAF,MHF,OHF,OSF,RGF**

C R A BEXTOR 872 5205 608<sup>#</sup>  
G A R PROPHET<sup>SV</sup>  
G A R OBJECTIVE 1885<sup>#</sup>

CONNEALY CONSENSUS<sup>#</sup>  
CONNEALY EARNAN 076E<sup>PV</sup>  
BRAZILA OF CONANGA 3991 839A<sup>#</sup>

**Sire: USA17960722 BALDRIDGE BEAST MODE B074<sup>PV</sup>**

**Dam: AHWJ81 ABERDEEN ESTATE LAURA J81<sup>PV</sup>**

STYLES UPGRADE J59<sup>#</sup>  
BALDRIDGE ISABEL Y69<sup>#</sup>  
BALDRIDGE ISABEL T935<sup>#</sup>

B/R AMBUSH 28<sup>#</sup>  
TUWHARETOA E111<sup>PV</sup>  
TUWHARETOA A52<sup>PV</sup>

**Mid March 2024 TransTasman Angus Cattle Evaluation**

TACE	Dir	Dtrs	GL	BW	200 W	400 W	600 W	MCW	Milk	SS	Doc
<b>EBV</b>	<b>-0.4</b>	<b>+4.5</b>	<b>-6.2</b>	<b>+4.5</b>	<b>+64</b>	<b>+108</b>	<b>+134</b>	<b>+114</b>	<b>+12</b>	<b>+1.0</b>	<b>+22</b>
ACC	77%	66%	96%	95%	90%	90%	88%	85%	78%	89%	81%
Perc	72	35	23	62	6	12	20	30	85	86	44

TACE	D t C	CWT	EMA	Rib	Rump	RBY	IMF	NFI-F	Claw	Angle	Leg
<b>EBV</b>	<b>-2.8</b>	<b>+78</b>	<b>+7.0</b>	<b>-1.3</b>	<b>-3.1</b>	<b>+0.3</b>	<b>+2.0</b>	<b>+0.29</b>	<b>+0.66</b>	<b>+0.64</b>	<b>+0.76</b>
ACC	56%	79%	78%	79%	79%	74%	80%	69%	74%	74%	71%
Perc	87	20	41	76	90	60	56	59	15	2	2

**Selection Indexes**

\$A	\$A-L
<b>\$210</b>	<b>\$358</b>
43	43

**Traits Observed:**  
BWT,400WT,SC,  
Scan(EMA,Rib,Rump,  
IMF),Genomics

Statistics: Number of Herds: 28, Prog Analysed: 172, Genomic Prog: 92

**RS**

**LANDFALL KEYSTONE Q750<sup>PV</sup>**

**TFAQ750**

DOB: 28/08/2019

Registration Status: **HBR**

Mating Type: **ET**

Genetic Status: **AMFU,CAFU,DDFU,NHFU**

BOOROOMOOKA UNDERTAKEN Y145<sup>PV</sup>  
RENNYLEA EDMUND E11<sup>PV</sup>  
LAWSONS HENRY VIII Y5<sup>SV</sup>

SCHURRTOP REALITY X723<sup>#</sup>  
MATAURI REALITY 839<sup>#</sup>  
MATAURI 06663<sup>#</sup>

**Sire: TFAK132 LANDFALL KEYSTONE K132<sup>PV</sup>**

**Dam: TFAL88 LANDFALL ELSA L88<sup>PV</sup>**

S A V FRONT RUNNER 0713<sup>#</sup>  
LANDFALL ARCHER H807<sup>SV</sup>  
LANDFALL ARCHER X9<sup>PV</sup>

TE MANIA EMPEROR E343<sup>PV</sup>  
LANDFALL ELSA J139<sup>#</sup>  
LANDFALL E103<sup>SV</sup>

**Mid March 2024 TransTasman Angus Cattle Evaluation**

TACE	Dir	Dtrs	GL	BW	200 W	400 W	600 W	MCW	Milk	SS	Doc
<b>EBV</b>	<b>+2.1</b>	<b>+6.1</b>	<b>-2.6</b>	<b>+4.1</b>	<b>+55</b>	<b>+99</b>	<b>+118</b>	<b>+107</b>	<b>+11</b>	<b>+3.6</b>	<b>+12</b>
ACC	76%	67%	84%	88%	85%	84%	85%	83%	79%	82%	81%
Perc	52	19	78	53	31	29	52	42	90	10	82

TACE	D t C	CWT	EMA	Rib	Rump	RBY	IMF	NFI-F	Claw	Angle	Leg
<b>EBV</b>	<b>-5.0</b>	<b>+86</b>	<b>+3.8</b>	<b>+2.5</b>	<b>+2.3</b>	<b>+0.2</b>	<b>+0.4</b>	<b>+0.50</b>	<b>+0.34</b>	<b>+0.90</b>	<b>+1.14</b>
ACC	55%	76%	74%	74%	75%	69%	78%	67%	72%	72%	71%
Perc	40	8	79	7	12	66	91	79	1	31	81

**Selection Indexes**

\$A	\$A-L
<b>\$201</b>	<b>\$361</b>
53	41

**Traits Observed:**  
BWT,200WT,400WT,  
600WT,SC,  
Scan(EMA,Rib,Rump,IMF),  
DOC,Genomics

Statistics: Number of Herds: 1, Prog Analysed: 3, Genomic Prog: 2

**RS**

**LANDFALL LEONARDO P145<sup>SV</sup>**

**TFAP145**

DOB: 18/07/2018

Registration Status: **HBR**

Mating Type: **AI**

Genetic Status: **AMF,CAF,DDF,NHF,DWF,MAF,MHF,OHF,OSF**

AA R TEN X 7008 S A<sup>SV</sup>  
DEER VALLEY ALL IN<sup>SV</sup>  
DEER VALLEY RITA 0274<sup>#</sup>

TUWHARETOA REGENT D145<sup>SV</sup>  
PRIME JUGGERNAUT J15<sup>SV</sup>  
PRIME LOWAN F20<sup>SV</sup>

**Sire: TFAL24 LANDFALL LEONARDO L24<sup>PV</sup>**

**Dam: TFAM243 LANDFALL ELSA M243<sup>#</sup>**

LANDFALL MODEST F178<sup>SV</sup>  
LANDFALL JOYLE J527<sup>SV</sup>  
LANDFALL JOYLE A503<sup>#</sup>

LANDFALL MODEST F178<sup>SV</sup>  
LANDFALL ELSA J561<sup>#</sup>  
LANDFALL ELSA Z303<sup>#</sup>

**Mid March 2024 TransTasman Angus Cattle Evaluation**

TACE	Dir	Dtrs	GL	BW	200 W	400 W	600 W	MCW	Milk	SS	Doc
<b>EBV</b>	<b>+9.2</b>	<b>-1.3</b>	<b>-7.3</b>	<b>+2.1</b>	<b>+44</b>	<b>+96</b>	<b>+117</b>	<b>+77</b>	<b>+28</b>	<b>+2.0</b>	<b>+8</b>
ACC	77%	69%	98%	98%	97%	97%	97%	90%	86%	93%	96%
Perc	3	86	12	14	81	39	55	86	2	54	92

TACE	D t C	CWT	EMA	Rib	Rump	RBY	IMF	NFI-F	Claw	Angle	Leg
<b>EBV</b>	<b>-7.3</b>	<b>+70</b>	<b>+2.7</b>	<b>+4.7</b>	<b>+6.1</b>	<b>-2.0</b>	<b>+4.0</b>	<b>+0.72</b>	<b>+0.74</b>	<b>+1.12</b>	<b>+0.78</b>
ACC	53%	84%	85%	85%	85%	79%	84%	67%	96%	96%	94%
Perc	6	41	88	1	1	99	13	91	28	81	3

**Selection Indexes**

\$A	\$A-L
<b>\$218</b>	<b>\$367</b>
33	36

**Traits Observed:**  
GL,CE,BWT,200WT,400WT,  
600WT,SC,S-  
can(EMA,Rib,Rump,IMF),  
DOC,Genomics

Statistics: Number of Herds: 3, Prog Analysed: 444, Genomic Prog: 443



**RS**

**SITZ TAILOR MADE 448H<sup>PV</sup>**

**USA19841441**

DOB: 22/01/2020

Registration Status: **HBR**

Mating Type: **Natural**

Genetic Status: **AMF,CAF,DDF,NHF,DWF,MAF,MHF,OHF,OSF,RGF**

EF COMPLEMENT 8088<sup>PV</sup>  
 EF COMMANDO 1366<sup>PV</sup>  
 RIVERBEND YOUNG LUCY W1470<sup>#</sup>

CONNEALY PRODUCT 568<sup>#</sup>  
 CONNEALY FINAL PRODUCT<sup>PV</sup>  
 EBONISTA OF CONANGA 471<sup>#</sup>

**Sire: USA18219911 BALDRIDGE COMMAND C036<sup>PV</sup>**

**Dam: USA17776820 SITZ PRIDE 200B<sup>#</sup>**

HOOVER DAM<sup>#</sup>  
 BALDRIDGE BLACKBIRD A030<sup>#</sup>  
 BALDRIDGE BLACKBIRD X89<sup>#</sup>

SITZ UPWARD 307R<sup>SV</sup>  
 SITZ PRIDE 308Y<sup>#</sup>  
 SITZ PRIDE 44P<sup>#</sup>

**Mid March 2024 TransTasman Angus Cattle Evaluation**

TACE	Dir	Dtrs	GL	BW	200 W	400 W	600 W	MCW	Milk	SS	Doc
<b>EBV</b>	<b>+5.8</b>	<b>+6.5</b>	<b>-9.1</b>	<b>+3.4</b>	<b>+61</b>	<b>+110</b>	<b>+136</b>	<b>+113</b>	<b>+16</b>	<b>+1.6</b>	<b>+10</b>
ACC	76%	63%	97%	95%	92%	90%	88%	85%	81%	87%	82%
Perc	19	16	4	36	11	9	17	32	61	70	87

TACE	D t C	CWT	EMA	Rib	Rump	RBV	IMF	NFI-F	Claw	Angle	Leg
<b>EBV</b>	<b>-6.3</b>	<b>+71</b>	<b>+9.3</b>	<b>-1.2</b>	<b>-3.9</b>	<b>+1.8</b>	<b>+0.1</b>	<b>+0.64</b>	<b>+0.86</b>	<b>+1.00</b>	<b>+0.92</b>
ACC	48%	82%	79%	77%	76%	71%	80%	64%	83%	83%	70%
Perc	15	39	19	74	95	3	95	88	54	56	18

**Selection Indexes**

\$A	\$A-L
<b>\$257</b>	<b>\$434</b>
6	3

**Traits Observed:** Structure (Claw Set x 1, Foot Angle x 1), Genomics

Statistics: Number of Herds: 19, Prog Analysed: 164, Genomic Prog: 49

**RS**

**STERLING PACIFIC 904<sup>PV</sup>**

**USA19444025**

DOB: 13/02/2019

Registration Status: **HBR**

Mating Type: **Natural**

Genetic Status: **AMF,CAF,DDF,NHF,DWF,MAF,MHF,OHF,OSF,RGF**

MOGCK SURE SHOT<sup>#</sup>  
 MOGCK BULLSEYE<sup>PV</sup>  
 MOGCK MARY 1255<sup>#</sup>

C R A BEXTOR 872 5205 608<sup>#</sup>  
 G A R PROPHET<sup>SV</sup>  
 G A R OBJECTIVE 1885<sup>#</sup>

**Sire: USA17882682 HOOVER NO DOUBT<sup>PV</sup>**

**Dam: USA18063292 BALDRIDGE ISABEL B082<sup>#</sup>**

SYDGEN C C & 7<sup>#</sup>  
 MISS BLACKCAP ELLSTON J2<sup>#</sup>  
 MISS BLACKCAP ELLSTON D154<sup>#</sup>

STYLES UPGRADE J59<sup>#</sup>  
 BALDRIDGE ISABEL Y69<sup>#</sup>  
 BALDRIDGE ISABEL T935<sup>#</sup>

**Mid March 2024 TransTasman Angus Cattle Evaluation**

TACE	Dir	Dtrs	GL	BW	200 W	400 W	600 W	MCW	Milk	SS	Doc
<b>EBV</b>	<b>-0.2</b>	<b>+1.5</b>	<b>-4.3</b>	<b>+4.7</b>	<b>+75</b>	<b>+125</b>	<b>+157</b>	<b>+153</b>	<b>+10</b>	<b>+2.0</b>	<b>+47</b>
ACC	80%	59%	99%	99%	98%	98%	97%	89%	82%	97%	96%
Perc	71	67	52	66	1	1	3	3	92	54	1

TACE	D t C	CWT	EMA	Rib	Rump	RBV	IMF	NFI-F	Claw	Angle	Leg
<b>EBV</b>	<b>-4.4</b>	<b>+88</b>	<b>+5.2</b>	<b>-1.0</b>	<b>-2.7</b>	<b>+0.0</b>	<b>+3.5</b>	<b>-0.34</b>	<b>+0.72</b>	<b>+0.78</b>	<b>+0.80</b>
ACC	51%	86%	88%	86%	84%	79%	87%	67%	96%	96%	85%
Perc	55	7	64	70	86	76	21	6	25	11	4

**Selection Indexes**

\$A	\$A-L
<b>\$246</b>	<b>\$434</b>
10	3

**Traits Observed:** Genomics

Statistics: Number of Herds: 150, Prog Analysed: 1675, Genomic Prog: 613



## Absolute Angus Northern Bull Sale

Animal Ident	Calving Ease				Growth				Fertility				Carcass				Feed			Structural			Selection Indexes		
	CEDir	CEDirs	GL	BWT	200	400	600	MCW	Milk	SS	DTC	CWT	EMA	RIB	P8	RBY	IMF	NFI-F	Doc	Claw	Angle	Leg	SA	SA-L	
1	HRW22T504	+5.5	+4.6	-9.7	+2.8	+56	+105	+138	+120	+11	+3.5	-3.7	+76	+9.5	+3.1	+4.3	-0.2	+2.4	+0.56	+33	-	-	-	-\$230	\$406
2	HRW22T569	+4.8	+0.4	-9.4	+4.4	+67	+121	+154	+144	+15	+2.0	-5.0	+87	+1.6	-1.5	-4.1	+0.1	+3.1	-0.22	+42	+0.48	+0.74	+0.86	\$233	\$422
3	HRW22T712	+8.2	+8.1	-6.8	+2.3	+56	+103	+134	+118	+21	+2.2	-3.3	+80	+5.5	+1.7	-1.0	-0.3	+2.3	+0.51	+11	+0.84	+1.02	+1.14	\$200	\$374
4	HRW22T939	+0.3	+0.1	-7.3	+5.8	+58	+101	+145	+137	+15	+4.0	-3.9	+85	+9.3	-2.3	-5.2	+0.6	+3.0	+0.39	+14	+0.86	+1.08	+1.00	\$188	\$351
5	HRW22T952	+7.5	+5.2	-7.5	+1.6	+46	+89	+101	+103	+8	+0.2	-5.5	+54	+7.8	+2.0	+5.1	+0.1	+3.5	+0.56	+21	+0.66	+0.86	+1.06	\$233	\$401
6	HRW22T557	+2.0	+2.9	+1.1	+1.5	+48	+87	+110	+98	+13	+0.8	-2.8	+61	+7.0	+0.3	+1.0	+0.0	+4.2	+0.15	+19	+0.98	+0.84	+0.90	\$197	\$334
7	HRW22T161	-1.5	+4.5	-6.1	+6.9	+62	+104	+125	+126	+6	+1.3	-3.4	+77	+8.4	-2.9	-4.9	+2.1	-0.5	+0.13	+30	+0.88	+0.82	+0.74	\$195	\$347
8	HRW22T598	+1.8	+4.9	-5.6	+3.9	+56	+98	+124	+104	+11	+4.2	-3.8	+78	+12.2	+0.2	-0.3	+1.3	+1.0	+0.85	+32	-	-	-	\$222	\$375
9	HRW22T624	+2.0	+3.9	-3.9	+4.6	+55	+97	+124	+113	+13	+2.7	-5.4	+84	+4.3	+0.7	+0.2	+0.4	+1.2	+0.35	+19	-	-	-	\$203	\$363
10	HRW22T655	+3.9	+4.9	-3.2	+3.3	+54	+98	+118	+97	+14	+2.3	-4.7	+77	+6.9	+0.5	+0.1	+0.8	+1.0	+0.51	+17	-	-	-	\$221	\$374
11	HRW22T673	+3.1	+2.4	-4.6	+3.5	+50	+98	+124	+97	+17	+3.8	-3.7	+64	+8.0	+1.8	+1.8	+0.1	+2.2	+0.81	+25	-	-	-	\$206	\$353
12	HRW22T679	+4.5	+6.6	-3.0	+2.4	+49	+93	+115	+100	+16	+3.1	-5.9	+74	+6.7	+1.3	+0.8	+0.8	+1.2	+0.49	+18	-	-	-	\$217	\$379
13	HRW22T739	-0.3	+1.9	-3.0	+3.8	+42	+82	+114	+89	+22	+5.0	-5.4	+47	+7.9	+3.0	+3.1	+0.5	+4.2	+0.55	+17	+0.60	+1.08	+1.12	\$215	\$350
14	HRW22T691	-6.7	+2.2	-2.6	+6.7	+55	+96	+129	+135	+7	+3.7	-3.2	+61	+7.8	+0.5	+0.6	+0.2	+3.4	+0.50	+22	+0.84	+0.84	+0.94	\$172	\$318
15	HRW22T675	-7.3	-0.6	-1.2	+5.5	+64	+116	+150	+130	+14	+5.6	-4.2	+77	+8.8	-0.1	-0.5	+1.1	+1.9	-0.46	+35	+0.88	+0.94	+1.00	\$220	\$373
16	HRW22T610	-0.4	-0.5	-3.7	+3.7	+42	+76	+98	+81	+7	+2.0	-4.7	+57	+6.4	+0.9	-0.5	+0.4	+2.8	+0.52	+14	-	-	-	\$175	\$292
17	HRW22T672	+0.7	-5.0	-4.4	+4.5	+49	+88	+119	+101	+11	+1.9	-4.7	+69	+7.3	+0.7	-0.7	+0.4	+2.4	+0.39	+19	-	-	-	\$187	\$320
18	HRW22T505	+4.4	+2.8	-5.0	+2.2	+45	+88	+114	+122	+10	+4.3	-4.2	+61	+5.5	+1.6	+1.1	+0.3	+2.9	+0.82	+25	-	-	-	\$176	\$343
19	HRW22T515	+0.4	+5.3	-5.9	+3.3	+51	+99	+129	+116	+17	+5.7	-4.5	+70	+1.8	+2.2	+2.7	-0.4	+1.3	+0.57	+20	-	-	-	\$173	\$334
20	HRW22T529	-0.1	+4.4	-4.1	+4.8	+51	+92	+118	+108	+10	+2.4	-5.2	+78	+5.2	+0.6	-0.5	+0.7	+0.8	+0.31	+4	-	-	-	\$187	\$335
21	HRW22T587	+6.9	+6.4	-5.2	+4.3	+55	+91	+117	+99	+20	+2.2	-4.6	+59	+3.6	+0.6	-1.5	-0.3	+3.9	+0.48	+26	+0.74	+1.00	+1.02	\$215	\$371
23	HRW22T618	+0.8	+3.1	-3.5	+2.5	+50	+95	+117	+92	+16	+4.0	-3.9	+69	+7.8	+2.5	+1.7	+0.3	+3.0	+0.79	+27	-	-	-	\$213	\$354
24	HRW22T619	+1.9	+5.7	-2.3	+4.1	+51	+90	+110	+94	+15	+2.1	-5.2	+73	+4.0	+0.8	+0.7	+0.7	+0.8	+0.30	+13	-	-	-	\$202	\$346
25	HRW22T644	-2.1	+4.6	-1.5	+6.1	+43	+76	+103	+85	+14	+2.4	-5.4	+63	+2.0	+2.3	+2.8	-0.3	+1.1	+0.49	+14	-	-	-	\$155	\$277
26	HRW22T684	+3.1	+3.6	-3.0	+3.7	+50	+90	+112	+102	+11	+2.4	-4.0	+73	+5.9	+0.7	+0.7	+0.8	+0.4	+0.24	+17	-	-	-	\$185	\$332
27	HRW22T695	+2.9	+6.0	-3.5	+3.7	+52	+92	+117	+102	+14	+2.9	-4.7	+75	+4.6	+0.9	+0.2	+0.5	+1.5	+0.29	+11	-	-	-	\$202	\$354
28	HRW22T698	+7.5	+7.5	-8.8	+2.4	+49	+90	+112	+86	+16	+2.2	-5.1	+74	+5.6	+1.2	+1.0	+0.3	+1.4	+0.57	+19	-	-	-	\$215	\$368
29	HRW22T975	-6.7	+1.0	-2.3	+6.6	+61	+95	+127	+120	+11	+2.4	-5.6	+78	+8.2	-0.3	+0.4	+0.7	+0.5	+0.40	+21	+0.60	+0.68	+1.00	\$194	\$332
30	HRW22T502	-2.3	+3.0	-7.0	+5.7	+60	+109	+141	+131	+12	+4.0	-4.3	+74	+8.0	+0.8	+1.3	+0.3	+1.7	+0.40	+28	-	-	-	\$209	\$375
31	HRW22T536	+1.5	+3.5	-3.7	+4.2	+54	+102	+131	+111	+12	+4.1	-2.9	+71	+10.3	+0.7	+0.6	+0.5	+2.5	+0.52	+24	-	-	-	\$211	\$365
32	HRW22T580	-4.0	-0.3	-5.0	+4.6	+59	+99	+122	+114	+12	+0.4	-4.8	+62	+6.5	+0.7	+0.1	-0.1	+2.6	-0.53	+30	+0.76	+0.72	+0.80	\$203	\$343
33	HRW22T900	+10.5	+2.6	-10.8	-0.2	+33	+83	+103	+78	+15	+1.1	-8.7	+65	+0.6	+5.9	+6.3	-1.5	+3.2	+0.84	+14	+0.92	+1.30	+1.04	\$199	\$353

TACE	CEDir	CEDirs	GL	BWT	200	400	600	MCW	Milk	SS	DTC	CWT	EMA	RIB	P8	RBY	IMF	NFI-F	Doc	Claw	Angle	Leg	SA	SA-L
	+1.7	+2.8	-4.4	+4.0	+51	+92	+119	+102	+17	+2.2	-4.6	+67	+6.4	-0.1	-0.3	+0.5	+2.3	+0.22	+21	+0.84	+0.97	+1.03	+201	+346

## Absolute Angus Northern Bull Sale

Animal Ident	Calving Ease				Growth				Fertility				Carcase				Feed Temp.			Structural			Selection Indexes	
	CEDir	CEDirs	GL	BWT	200	400	600	MCW	Milk	SS	DTC	CWT	EMA	RIB	P8	RBY	IMF	NFI-F	Doc	Claw	Angle	Leg	\$A	\$A-L
34	HRW22T683	-1.7	+1.1	-6.2	+2.6	+50	+102	+130	+123	+4	+3.3	-4.8	+74	+9.3	+2.4	+2.0	+2.6	+0.98	+32	-	-	-	\$206	\$369
35	HRW22T736	+1.9	+1.6	-5.2	+2.8	+45	+84	+104	+89	+11	+3.9	-2.5	+54	+10.4	+2.8	+4.8	+2.8	+1.05	+20	+0.46	+0.48	+0.60	\$189	\$322
36	HRW22T662	+1.5	-1.7	-2.9	+3.3	+49	+92	+118	+105	+11	+4.4	-3.9	+60	+10.5	+1.1	+1.0	+2.5	+0.62	+29	-	-	-	\$204	\$350
37	HRW22T677	-	-	-	-	-	-	-	-	-	-	-	-	-	-	-	-	-	-	-	-	-	-	-
38	HRW22T693	-	-	-	-	-	-	-	-	-	-	-	-	-	-	-	-	-	-	-	-	-	-	-
39	HRW22T908	-	-	-	-	-	-	-	-	-	-	-	-	-	-	-	-	-	-	-	-	-	-	-
40	HRW22T943	+5.9	+7.5	-8.0	+5.6	+52	+91	+113	+98	+10	+0.0	-5.7	+69	+4.7	+3.7	+4.5	+0.5	+0.35	+17	+0.74	+1.00	+0.86	\$217	\$376
41	HRW22T946	-	-	-	-	-	-	-	-	-	-	-	-	-	-	-	-	-	-	-	-	-	-	-
42	HRW22T968	-	-	-	-	-	-	-	-	-	-	-	-	-	-	-	-	-	-	-	-	-	-	-
43	HRW22T631	+0.9	+3.4	-3.4	+3.1	+48	+84	+101	+91	+15	+2.4	-4.7	+70	+3.2	+1.2	+0.9	+1.2	+0.42	+13	-	-	-	\$176	\$309



*Maxstar*

## Lot 1 ABSOLUTE NEWGROUND T504<sup>SV</sup> HRW22T504

DOB: 05/10/2022 Registration Status: HBR Mating Type: AI Genetic Status: AMFU,CAFU,DDFU,NHFU  
 A A R TEN X 7008 S A<sup>SV</sup> BASIN FRANCHISE P142<sup>#</sup>  
 V A R DISCOVERY 2240<sup>PV</sup> EF COMPLEMENT 8088<sup>PV</sup>  
 DEER VALLEY RITA 0308<sup>#</sup> EF EVERELDA ENTENSE 6117<sup>#</sup>

Sire: TFAN90 LANDFALL NEW GROUND N90<sup>PV</sup> Dam: HRWN297 ABSOLUTE BARA N297<sup>#</sup>  
 MATAURI REALITY 839<sup>#</sup> SYDGEN TRUST 6228<sup>#</sup>  
 LANDFALL ELSA L88<sup>PV</sup> KENNY'S CREEK BARA J226<sup>#</sup>  
 LANDFALL ELSA J139<sup>#</sup> KENNY'S CREEK BARA E134<sup>#</sup>

### Mid March 2024 TransTasman Angus Cattle Evaluation

TACE	Dir	Dtrs	GL	BW	200 W	400 W	600 W	MCW	Milk	SS	Doc
EBV	+5.5	+4.6	-9.7	+2.8	+56	+105	+138	+120	+11	+3.5	+33
ACC	71%	63%	83%	82%	83%	82%	82%	79%	76%	80%	78%
Perc	21	34	2	24	25	15	15	22	89	12	11

TACE	D t C	CWT	EMA	Rib	Rump	RBV	IMF	NFI-F	Claw	Angle	Leg
EBV	-3.7	+76	+9.5	+3.1	+4.3	-0.2	+2.4	+0.56	-	-	-
ACC	48%	72%	71%	71%	72%	64%	75%	63%	-	-	-
Perc	71	26	17	4	3	84	44	83	-	-	-

### Selection Indexes

\$A	\$A-L
\$230	\$406
21	11

Traits Observed: GL, BWT, Genomics

Notes:

Purchaser: ..... \$: .....

## Lot 2 ABSOLUTE PACIFIC T569<sup>PV</sup> HRW22T569

DOB: 14/11/2022 Registration Status: HBR Mating Type: ET Genetic Status: AMFU,CAFU,DDFU,NHFU  
 MOGCK BULLSEYE<sup>PV</sup> SITZ UPWARD 307R<sup>SV</sup>  
 HOOVER NO DOUBT<sup>PV</sup> THOMAS UP RIVER 1614<sup>PV</sup>  
 MISS BLACKCAP ELLSTON J2<sup>#</sup> THOMAS CAROL 7595<sup>#</sup>

Sire: USA19444025 STERLING PACIFIC 904<sup>PV</sup> Dam: HRWP803 ABSOLUTE LOWAN P803<sup>PV</sup>  
 G A R PROPHET<sup>SV</sup> TE MANIA BERKLEY B1<sup>PV</sup>  
 BALDRIDGE ISABEL B082<sup>#</sup> TE MANIA LOWAN G251<sup>PV</sup>  
 BALDRIDGE ISABEL Y69<sup>#</sup> TE MANIA LOWAN Z74<sup>PV</sup>

### Mid March 2024 TransTasman Angus Cattle Evaluation

TACE	Dir	Dtrs	GL	BW	200 W	400 W	600 W	MCW	Milk	SS	Doc
EBV	+4.8	+0.4	-9.4	+4.4	+67	+121	+154	+144	+15	+2.0	+42
ACC	67%	56%	83%	83%	84%	82%	82%	78%	74%	81%	78%
Perc	27	76	3	60	3	2	3	6	69	54	2

TACE	D t C	CWT	EMA	Rib	Rump	RBV	IMF	NFI-F	Claw	Angle	Leg
EBV	-5.0	+87	+1.6	-1.5	-4.1	+0.1	+3.1	-0.22	+0.48	+0.74	+0.86
ACC	44%	71%	72%	71%	72%	64%	75%	62%	70%	70%	65%
Perc	40	7	94	80	95	71	28	11	3	7	8

### Selection Indexes

\$A	\$A-L
\$233	\$422
19	6

Traits Observed: BWT, Genomics

Notes:

Purchaser: ..... \$: .....

## Lot 3 ABSOLUTE 38 SPECIAL T712<sup>SV</sup> HRW22T712

DOB: 23/10/2022 Registration Status: HBR Mating Type: AI Genetic Status: AMFU,CAFU,DD4%,NHFU  
 EF COMPLEMENT 8088<sup>PV</sup> TE MANIA BARTEL B219<sup>PV</sup>  
 EF COMMANDO 1366<sup>PV</sup> AYRVALE BARTEL E7<sup>PV</sup>  
 RIVERBEND YOUNG LUCY W1470<sup>#</sup> EAGLEHAWK JEDDA B32<sup>SV</sup>

Sire: USA18229487 BALDRIDGE 38 SPECIAL<sup>PV</sup> Dam: VLYH1095 LAWSONS BARTEL E7 H1095<sup>#</sup>  
 STYLES UPGRADE J59<sup>#</sup> LAWSONS TANK X1235<sup>#</sup>  
 BALDRIDGE ISABEL Y69<sup>#</sup> LAWSONS TANK D977<sup>#</sup>  
 BALDRIDGE ISABEL T935<sup>#</sup> LAWSONS HENRY VIII W494<sup>#</sup>

### Mid March 2024 TransTasman Angus Cattle Evaluation

TACE	Dir	Dtrs	GL	BW	200 W	400 W	600 W	MCW	Milk	SS	Doc
EBV	+8.2	+8.1	-6.8	+2.3	+56	+103	+134	+118	+21	+2.2	+11
ACC	70%	60%	83%	82%	83%	82%	82%	79%	76%	80%	78%
Perc	6	6	17	17	27	19	20	25	19	47	86

TACE	D t C	CWT	EMA	Rib	Rump	RBV	IMF	NFI-F	Claw	Angle	Leg
EBV	-3.3	+80	+5.5	+1.7	-1.0	-0.3	+2.3	+0.51	+0.84	+1.02	+1.14
ACC	46%	72%	71%	71%	72%	64%	75%	63%	71%	71%	68%
Perc	79	16	60	14	62	87	47	80	49	61	81

### Selection Indexes

\$A	\$A-L
\$200	\$374
54	30

Traits Observed: BWT, Genomics

Notes:

Purchaser: ..... \$: .....

## Lot 4

## ABSOLUTE T939<sup>SV</sup>

## HRW22T939

DOB: 02/10/2022

Registration Status: HBR

Mating Type: Natural

Genetic Status: AMFU,CAFU,DDFU,NHFU

V A R DISCOVERY 2240<sup>PV</sup>  
 LANDFALL DISCOVERY N241<sup>SV</sup>  
 LANDFALL ELSA L53<sup>#</sup>

THOMAS UP RIVER 1614<sup>PV</sup>  
 ABSOLUTE UP RIVER N270<sup>SV</sup>  
 TE MANIA BOORTKOI H869<sup>SV</sup>

Sire: TFAQ543 LANDFALL Q543<sup>SV</sup>

Dam: HRWR111 ABSOLUTE USUAL R111<sup>#</sup>

RENNYLEA EDMUND E11<sup>PV</sup>  
 LANDFALL FEARLESS N1047<sup>PV</sup>  
 LANDFALL EMIT K204<sup>PV</sup>

LD CAPITALIST 316<sup>PV</sup>  
 ABSOLUTE USUAL P35<sup>#</sup>  
 WATTLETOP J102<sup>#</sup>

### Mid March 2024 TransTasman Angus Cattle Evaluation

TACE	Dir	Dtrs	GL	BW	200 W	400 W	600 W	MCW	Milk	SS	Doc
EBV	+0.3	+0.1	-7.3	+5.8	+58	+101	+145	+137	+15	+4.0	+14
ACC	61%	51%	80%	80%	81%	78%	79%	75%	70%	76%	72%
Perc	67	78	12	85	19	25	8	9	64	6	77

TACE	D t C	CWT	EMA	Rib	Rump	RBV	IMF	NFI-F	Claw	Angle	Leg
EBV	-3.9	+85	+9.3	-2.3	-5.2	+0.6	+3.0	+0.39	+0.86	+1.08	+1.00
ACC	37%	66%	66%	66%	67%	56%	71%	57%	61%	61%	59%
Perc	67	9	19	90	98	41	30	69	54	74	40

### Selection Indexes

\$A	\$A-L
\$188	\$351
67	49

Traits Observed: BWT, Genomics

Notes:

Purchaser: ..... \$: .....

## Lot 5

## ABSOLUTE RIMFIRE T952<sup>SV</sup>

## HRW22T952

DOB: 18/10/2022

Registration Status: APR

Mating Type: Natural

Genetic Status: AMFU,CAFU,DDFU,NHFU

TEHAMA REVERE<sup>#</sup>  
 S POWERPOINT WS 5503<sup>PV</sup>  
 S QUEEN ESSA 248<sup>#</sup>

V A R DISCOVERY 2240<sup>PV</sup>  
 LANDFALL NEW GROUND N90<sup>PV</sup>  
 LANDFALL ELSA L88<sup>PV</sup>

Sire: NJWR1023 MILWILLAH RIMFIRE R1023<sup>PV</sup>

Dam: HRWR84 ABSOLUTE ELSA R84<sup>#</sup>

MATAURI REALITY 839<sup>#</sup>  
 MILWILLAH BARUNAH K26<sup>SV</sup>  
 MILWILLAH BARUNAH F2<sup>#</sup>

LANDFALL HANK H68<sup>PV</sup>  
 LANDFALL ELSA L126<sup>#</sup>  
 LANDFALL ELSA J13<sup>#</sup>

### Mid March 2024 TransTasman Angus Cattle Evaluation

TACE	Dir	Dtrs	GL	BW	200 W	400 W	600 W	MCW	Milk	SS	Doc
EBV	+7.5	+5.2	-7.5	+1.6	+46	+89	+101	+103	+8	+0.2	+21
ACC	64%	53%	80%	81%	81%	79%	79%	75%	71%	76%	72%
Perc	9	27	11	9	74	60	85	48	97	97	48

TACE	D t C	CWT	EMA	Rib	Rump	RBV	IMF	NFI-F	Claw	Angle	Leg
EBV	-5.5	+54	+7.8	+2.0	+5.1	+0.1	+3.5	+0.56	+0.66	+0.86	+1.06
ACC	38%	67%	66%	66%	67%	58%	71%	57%	66%	66%	63%
Perc	29	85	32	11	2	71	21	83	15	23	59

### Selection Indexes

\$A	\$A-L
\$233	\$401
19	13

Traits Observed: BWT, Genomics

Notes:

Purchaser: ..... \$: .....

## Lot 6

## ABSOLUTE QUEENSLANDER T557<sup>PV</sup>

## HRW22T557

DOB: 26/11/2022

Registration Status: HBR

Mating Type: ET

Genetic Status: AMFU,CAFU,DDFU,NHFU

G A R PROPHET<sup>SV</sup>  
 BALDRIDGE BEAST MODE B074<sup>PV</sup>  
 BALDRIDGE ISABEL Y69<sup>#</sup>

SCR PROMISE 4042<sup>#</sup>  
 SYDGEN TRUST 6228<sup>#</sup>  
 SYDGEN FOREVER LADY 4413<sup>#</sup>

Sire: NBHQ311 CLUNIE RANGE QUEENSLANDER Q311<sup>PV</sup>

Dam: HRWN260 ABSOLUTE N260<sup>PV</sup>

CONNELLY EARNAN 076E<sup>PV</sup>  
 ABERDEEN ESTATE LAURA J81<sup>PV</sup>  
 TUWHARETOA E111<sup>PV</sup>

TUWHARETOA REGENT D145<sup>PV</sup>  
 KENNY'S CREEK ROSEBUD H768<sup>SV</sup>  
 VERMONT ROSEBUD C323<sup>PV</sup>

### Mid March 2024 TransTasman Angus Cattle Evaluation

TACE	Dir	Dtrs	GL	BW	200 W	400 W	600 W	MCW	Milk	SS	Doc
EBV	+2.0	+2.9	+1.1	+1.5	+48	+87	+110	+98	+13	+0.8	+19
ACC	65%	57%	82%	82%	82%	80%	81%	77%	73%	79%	75%
Perc	53	53	99	8	65	65	70	56	79	90	58

TACE	D t C	CWT	EMA	Rib	Rump	RBV	IMF	NFI-F	Claw	Angle	Leg
EBV	-2.8	+61	+7.0	+0.3	+1.0	+0.0	+4.2	+0.15	+0.98	+0.84	+0.90
ACC	44%	69%	69%	69%	70%	61%	74%	61%	66%	66%	64%
Perc	87	69	41	39	27	76	11	42	76	19	14

### Selection Indexes

\$A	\$A-L
\$197	\$334
58	63

Traits Observed: BWT, Genomics

Notes:

Purchaser: ..... \$: .....

## Lot 7

## ABSOLUTE TAILOR MADE T161<sup>PV</sup>

## HRW22T161

DOB: 10/09/2022

Registration Status: HBR

Mating Type: ET

Genetic Status: AMFU,CAFU,DDFU,NHFU

EF COMMANDO 1366<sup>PV</sup>  
BALDRIDGE COMMAND C036<sup>PV</sup>  
BALDRIDGE BLACKBIRD A030<sup>#</sup>

TE MANIA UNLIMITED U3271<sup>#</sup>  
TE MANIA INFINITY 04 379 AB<sup>#</sup>  
TE MANIA 95102<sup>#</sup>

Sire: USA19841441 SITZ TAILOR MADE 448H<sup>PV</sup>

Dam: HRWK5 ABSOLUTE DANDLOO K5<sup>SV</sup>

CONNEALY FINAL PRODUCT<sup>PV</sup>  
SITZ PRIDE 200B<sup>#</sup>  
SITZ PRIDE 308Y<sup>#</sup>

TE MANIA EMPEROR E343<sup>PV</sup>  
TE MANIA DANDLOO H421<sup>#</sup>  
TE MANIA DANDLOO B76<sup>PV</sup>

### Mid March 2024 TransTasman Angus Cattle Evaluation

TACE	Dir	Dtrs	GL	BW	200 W	400 W	600 W	MCW	Milk	SS	Doc
EBV	-1.5	+4.5	-6.1	+6.9	+62	+104	+125	+126	+6	+1.3	+30
ACC	66%	57%	82%	82%	82%	81%	81%	77%	74%	79%	75%
Perc	79	35	24	95	10	19	37	17	99	79	15

TACE	D t C	CWT	EMA	Rib	Rump	RBV	IMF	NFI-F	Claw	Angle	Leg
EBV	-3.4	+77	+8.4	-2.9	-4.9	+2.1	-0.5	+0.13	+0.88	+0.82	+0.74
ACC	44%	70%	70%	69%	70%	61%	74%	61%	68%	69%	65%
Perc	77	22	26	95	98	1	98	40	58	16	2

### Selection Indexes

\$A	\$A-L
\$195	\$347
61	53

Traits Observed: BWT, Genomics

Notes:

Purchaser: ..... \$: .....

## Lot 8

## ABSOLUTE RIMFIRE T598<sup>SV</sup>

## HRW22T598

DOB: 13/10/2022

Registration Status: HBR

Mating Type: Natural

Genetic Status: AMFU,CAFU,DDFU,NHFU

A A R TEN X 7008 S A<sup>SV</sup>  
V A R DISCOVERY 2240<sup>PV</sup>  
DEER VALLEY RITA 0308<sup>#</sup>

BASIN FRANCHISE P142<sup>#</sup>  
EF COMPLEMENT 8088<sup>PV</sup>  
EF EVERELDA ENTENSE 6117<sup>#</sup>

Sire: TFAN90 LANDFALL NEW GROUND N90<sup>PV</sup>

Dam: HRWN343 ABSOLUTE N343<sup>#</sup>

MATAURI REALITY 839<sup>#</sup>  
LANDFALL ELSA L88<sup>PV</sup>  
LANDFALL ELSA J139<sup>#</sup>

KENNY'S CREEK WARWICK G1<sup>PV</sup>  
ABSOLUTE BARA K2<sup>#</sup>  
KENNY'S CREEK BARA D128<sup>#</sup>

### Mid March 2024 TransTasman Angus Cattle Evaluation

TACE	Dir	Dtrs	GL	BW	200 W	400 W	600 W	MCW	Milk	SS	Doc
EBV	+1.8	+4.9	-5.6	+3.9	+56	+98	+124	+104	+11	+4.2	+32
ACC	71%	62%	83%	82%	84%	82%	82%	80%	76%	80%	78%
Perc	55	30	31	48	27	33	40	47	91	5	12

TACE	D t C	CWT	EMA	Rib	Rump	RBV	IMF	NFI-F	Claw	Angle	Leg
EBV	-3.8	+78	+12.2	+0.2	-0.3	+1.3	+1.0	+0.85	-	-	-
ACC	48%	72%	72%	71%	72%	64%	76%	63%	-	-	-
Perc	69	21	5	41	49	10	82	95	-	-	-

### Selection Indexes

\$A	\$A-L
\$222	\$375
29	30

Traits Observed: BWT, Genomics

Notes:

Purchaser: ..... \$: .....

## Lot 9

## ABSOLUTE PRIME T624<sup>SV</sup>

## HRW22T624

DOB: 23/10/2022

Registration Status: APR

Mating Type: Natural

Genetic Status: AM3%,CAFU,DD2%,NHFU

G A R PROPHET<sup>SV</sup>  
TE MANIA KIRBY K138<sup>PV</sup>  
TE MANIA BEEAC H17<sup>SV</sup>

RENNYLEA EDMUND E11<sup>PV</sup>  
ARDROSSAN EDMUND K165<sup>PV</sup>  
ARDROSSAN BLACKBIRD D204<sup>SV</sup>

Sire: VTMP586 TE MANIA PRIME P586<sup>PV</sup>

Dam: HRWQ273 ABSOLUTE Q273<sup>#</sup>

TE MANIA EMPEROR E343<sup>PV</sup>  
TE MANIA DANDLOO H320<sup>PV</sup>  
TE MANIA DANDLOO B76<sup>PV</sup>

LANDFALL EQUATOR G435<sup>SV</sup>  
LANDFALL J250<sup>#</sup>  
REDWOOD G20<sup>#</sup>

### Mid March 2024 TransTasman Angus Cattle Evaluation

TACE	Dir	Dtrs	GL	BW	200 W	400 W	600 W	MCW	Milk	SS	Doc
EBV	+2.0	+3.9	-3.9	+4.6	+55	+97	+124	+113	+13	+2.7	+19
ACC	55%	47%	62%	70%	66%	63%	64%	63%	56%	60%	57%
Perc	53	42	58	64	31	36	39	32	78	29	55

TACE	D t C	CWT	EMA	Rib	Rump	RBV	IMF	NFI-F	Claw	Angle	Leg
EBV	-5.4	+84	+4.3	+0.7	+0.2	+0.4	+1.2	+0.35	-	-	-
ACC	36%	55%	55%	57%	57%	51%	60%	48%	-	-	-
Perc	31	11	74	31	40	53	77	65	-	-	-

### Selection Indexes

\$A	\$A-L
\$203	\$363
50	40

Traits Observed: BWT

Notes:

Purchaser: ..... \$: .....

## Lot 10 ABSOLUTE NEWGROUND T655<sup>SV</sup> HRW22T655

DOB: 20/10/2022 Registration Status: **HBR** Mating Type: **Natural** Genetic Status: **AMFU,CAFU,DDFU,NHFU**  
 A A R TEN X 7008 S A<sup>SV</sup>  
 V A R DISCOVERY 2240<sup>PV</sup> BALDRIDGE COMMAND C036<sup>PV</sup>  
 DEER VALLEY RITA 0308<sup>#</sup> BALDRIDGE BLACKBIRD A030<sup>#</sup>  
**Sire: TFAN90 LANDFALL NEW GROUND N90<sup>PV</sup>** **Dam: HRWQ480 ABSOLUTE Q480<sup>#</sup>**  
 MATAURI REALITY 839<sup>#</sup> EF COMPLEMENT 8088<sup>PV</sup>  
 LANDFALL ELSA L88<sup>PV</sup> ABSOLUTE N294<sup>#</sup>  
 LANDFALL ELSA J139<sup>#</sup> ABSOLUTE DANDLOO K5<sup>SV</sup>

### Mid March 2024 TransTasman Angus Cattle Evaluation

TACE	Dir	Dtrs	GL	BW	200 W	400 W	600 W	MCW	Milk	SS	Doc
<b>EBV</b>	<b>+3.9</b>	<b>+4.9</b>	<b>-3.2</b>	<b>+3.3</b>	<b>+54</b>	<b>+98</b>	<b>+118</b>	<b>+97</b>	<b>+14</b>	<b>+2.3</b>	<b>+17</b>
ACC	58%	51%	67%	70%	68%	65%	66%	65%	60%	63%	61%
Perc	35	30	69	34	36	33	52	59	71	43	67

TACE	D t C	CWT	EMA	Rib	Rump	RBV	IMF	NFI-F	Claw	Angle	Leg
<b>EBV</b>	<b>-4.7</b>	<b>+77</b>	<b>+6.9</b>	<b>+0.5</b>	<b>+0.1</b>	<b>+0.8</b>	<b>+1.0</b>	<b>+0.51</b>	-	-	-
ACC	39%	58%	58%	59%	59%	53%	62%	51%	-	-	-
Perc	47	23	43	35	41	29	82	80	-	-	-

### Selection Indexes

\$A	\$A-L
<b>\$221</b>	<b>\$374</b>
30	30

Traits Observed: BWT

Notes:

Purchaser: ..... \$: .....

## Lot 11 ABSOLUTE PRIME T673<sup>SV</sup> HRW22T673

DOB: 27/10/2022 Registration Status: **HBR** Mating Type: **Natural** Genetic Status: **AMFU,CAFU,DDFU,NHFU**  
 G A R PROPHET<sup>SV</sup>  
 TE MANIA KIRBY K138<sup>PV</sup> THOMAS UP RIVER 1614<sup>PV</sup>  
 TE MANIA BEEAC H17<sup>SV</sup> THOMAS CAROL 7595<sup>#</sup>  
**Sire: VTMP586 TE MANIA PRIME P586<sup>PV</sup>** **Dam: HRWN275 ABSOLUTE JAPARA N275<sup>#</sup>**  
 TE MANIA EMPEROR E343<sup>PV</sup> TE MANIA EARL GREY E25<sup>SV</sup>  
 TE MANIA DANDLOO H320<sup>PV</sup> TE MANIA JAPARA H32<sup>#</sup>  
 TE MANIA DANDLOO B76<sup>PV</sup> TE MANIA JAPARA F106<sup>#</sup>

### Mid March 2024 TransTasman Angus Cattle Evaluation

TACE	Dir	Dtrs	GL	BW	200 W	400 W	600 W	MCW	Milk	SS	Doc
<b>EBV</b>	<b>+3.1</b>	<b>+2.4</b>	<b>-4.6</b>	<b>+3.5</b>	<b>+50</b>	<b>+98</b>	<b>+124</b>	<b>+97</b>	<b>+17</b>	<b>+3.8</b>	<b>+25</b>
ACC	64%	57%	71%	70%	71%	69%	69%	69%	64%	67%	66%
Perc	43	58	47	38	55	31	38	58	47	8	30

TACE	D t C	CWT	EMA	Rib	Rump	RBV	IMF	NFI-F	Claw	Angle	Leg
<b>EBV</b>	<b>-3.7</b>	<b>+64</b>	<b>+8.0</b>	<b>+1.8</b>	<b>+1.8</b>	<b>+0.1</b>	<b>+2.2</b>	<b>+0.81</b>	-	-	-
ACC	44%	63%	62%	64%	64%	59%	65%	54%	-	-	-
Perc	71	60	30	13	17	71	50	94	-	-	-

### Selection Indexes

\$A	\$A-L
<b>\$206</b>	<b>\$353</b>
48	47

Traits Observed: None

Notes:

Purchaser: ..... \$: .....

## Lot 12 ABSOLUTE NEWGROUND T679<sup>SV</sup> HRW22T679

DOB: 24/10/2022 Registration Status: **HBR** Mating Type: **Natural** Genetic Status: **AMFU,CAFU,DDFU,NHFU**  
 A A R TEN X 7008 S A<sup>SV</sup>  
 V A R DISCOVERY 2240<sup>PV</sup> BASIN FRANCHISE P142<sup>#</sup>  
 DEER VALLEY RITA 0308<sup>#</sup> EF COMPLEMENT 8088<sup>PV</sup>  
**Sire: TFAN90 LANDFALL NEW GROUND N90<sup>PV</sup>** **Dam: HRWN313 ABSOLUTE N313<sup>#</sup>**  
 MATAURI REALITY 839<sup>#</sup> MILLAH MURRAH EQUATOR D78<sup>PV</sup>  
 LANDFALL ELSA L88<sup>PV</sup> KENNY'S CREEK JEDDA J242<sup>#</sup>  
 LANDFALL ELSA J139<sup>#</sup> KENNY'S CREEK JEDDA F743<sup>#</sup>

### Mid March 2024 TransTasman Angus Cattle Evaluation

TACE	Dir	Dtrs	GL	BW	200 W	400 W	600 W	MCW	Milk	SS	Doc
<b>EBV</b>	<b>+4.5</b>	<b>+6.6</b>	<b>-3.0</b>	<b>+2.4</b>	<b>+49</b>	<b>+93</b>	<b>+115</b>	<b>+100</b>	<b>+16</b>	<b>+3.1</b>	<b>+18</b>
ACC	58%	51%	67%	69%	66%	64%	64%	64%	59%	62%	60%
Perc	30	15	72	18	57	47	59	53	55	19	60

TACE	D t C	CWT	EMA	Rib	Rump	RBV	IMF	NFI-F	Claw	Angle	Leg
<b>EBV</b>	<b>-5.9</b>	<b>+74</b>	<b>+6.7</b>	<b>+1.3</b>	<b>+0.8</b>	<b>+0.8</b>	<b>+1.2</b>	<b>+0.49</b>	-	-	-
ACC	40%	57%	57%	59%	59%	53%	62%	51%	-	-	-
Perc	21	30	45	20	29	29	77	78	-	-	-

### Selection Indexes

\$A	\$A-L
<b>\$217</b>	<b>\$379</b>
34	27

Traits Observed: BWT

Notes:

Purchaser: ..... \$: .....

## Lot 13 ABSOLUTE NEWGROUND T739<sup>SV</sup> HRW22T739

DOB: 20/10/2022 Registration Status: **HBR** Mating Type: **Natural** Genetic Status: **AMFU,CAFU,DDFU,NHFU**  
 A A R TEN X 7008 S A<sup>SV</sup> TE MANIA AMBASSADOR A134<sup>SV</sup>  
 V A R DISCOVERY 2240<sup>PV</sup> TUWHARETOA REGENT D145<sup>PV</sup>  
 DEER VALLEY RITA 0308<sup>#</sup> LAWSONS HENRY VIII Y5<sup>SV</sup>

**Sire: TFAN90 LANDFALL NEW GROUND N90<sup>PV</sup>** **Dam: VTMH1098 TE MANIA MITTAGONG H1098<sup>#</sup>**  
 MATAURI REALITY 839<sup>#</sup> TE MANIA YORKSHIRE Y437<sup>PV</sup>  
 LANDFALL ELSA L88<sup>PV</sup> TE MANIA MITTAGONG D51<sup>#</sup>  
 LANDFALL ELSA J139<sup>#</sup> TE MANIA MITTAGONG B780<sup>#</sup>

### Mid March 2024 TransTasman Angus Cattle Evaluation

TACE	Dir	Dtrs	GL	BW	200 W	400 W	600 W	MCW	Milk	SS	Doc
<b>EBV</b>	<b>-0.3</b>	<b>+1.9</b>	<b>-3.0</b>	<b>+3.8</b>	<b>+42</b>	<b>+82</b>	<b>+114</b>	<b>+89</b>	<b>+22</b>	<b>+5.0</b>	<b>+17</b>
ACC	70%	61%	83%	82%	83%	81%	82%	79%	75%	80%	77%
Perc	71	63	72	45	86	79	60	71	16	2	64

TACE	D t C	CWT	EMA	Rib	Rump	RBV	IMF	NFI-F	Claw	Angle	Leg
<b>EBV</b>	<b>-5.4</b>	<b>+47</b>	<b>+7.9</b>	<b>+3.0</b>	<b>+3.1</b>	<b>+0.5</b>	<b>+4.2</b>	<b>+0.55</b>	<b>+0.60</b>	<b>+1.08</b>	<b>+1.12</b>
ACC	47%	71%	70%	70%	71%	63%	74%	61%	71%	71%	70%
Perc	31	94	31	5	7	47	11	82	9	74	76

### Selection Indexes

\$A	\$A-L
<b>\$215</b>	<b>\$350</b>
37	50

**Traits Observed:** BWT, Genomics

Notes: Purchaser:.....\$:

## Lot 14 ABSOLUTE NEWGROUND T691<sup>SV</sup> HRW22T691

DOB: 24/10/2022 Registration Status: **HBR** Mating Type: **Natural** Genetic Status: **AMFU,CA12%,DD13%,NHFU**  
 A A R TEN X 7008 S A<sup>SV</sup> WMR TIMELESS 458<sup>#</sup>  
 V A R DISCOVERY 2240<sup>PV</sup> GDAR REGULATOR 364<sup>PV</sup>  
 DEER VALLEY RITA 0308<sup>#</sup> GDAR BLACKCAP LADY 071<sup>#</sup>

**Sire: TFAN90 LANDFALL NEW GROUND N90<sup>PV</sup>** **Dam: HRWP258 ABSOLUTE WARGOONA P258<sup>#</sup>**  
 MATAURI REALITY 839<sup>#</sup> TE MANIA AFRICA A217<sup>PV</sup>  
 LANDFALL ELSA L88<sup>PV</sup> ABSOLUTE WARGOONA G18<sup>#</sup>  
 LANDFALL ELSA J139<sup>#</sup> TE MANIA WARGOONA A202<sup>#</sup>

### Mid March 2024 TransTasman Angus Cattle Evaluation

TACE	Dir	Dtrs	GL	BW	200 W	400 W	600 W	MCW	Milk	SS	Doc
<b>EBV</b>	<b>-6.7</b>	<b>+2.2</b>	<b>-2.6</b>	<b>+6.7</b>	<b>+55</b>	<b>+96</b>	<b>+129</b>	<b>+135</b>	<b>+7</b>	<b>+3.7</b>	<b>+22</b>
ACC	69%	61%	83%	82%	83%	81%	82%	79%	75%	79%	77%
Perc	95	60	78	94	29	37	29	10	99	9	42

TACE	D t C	CWT	EMA	Rib	Rump	RBV	IMF	NFI-F	Claw	Angle	Leg
<b>EBV</b>	<b>-3.2</b>	<b>+61</b>	<b>+7.8</b>	<b>+0.5</b>	<b>+0.6</b>	<b>+0.2</b>	<b>+3.4</b>	<b>+0.50</b>	<b>+0.84</b>	<b>+0.84</b>	<b>+0.94</b>
ACC	46%	71%	71%	71%	72%	64%	74%	62%	69%	69%	68%
Perc	81	68	32	35	33	66	23	79	49	19	22

### Selection Indexes

\$A	\$A-L
<b>\$172</b>	<b>\$318</b>
81	74

**Traits Observed:** BWT, Genomics

Notes: Purchaser:.....\$:

## Lot 15 ABSOLUTE NEWGROUND T675<sup>SV</sup> HRW22T675

DOB: 13/10/2022 Registration Status: **APR** Mating Type: **Natural** Genetic Status: **AMFU,CAFU,DDFU,NHFU**  
 A A R TEN X 7008 S A<sup>SV</sup> LT 598 BANDO 9074<sup>#</sup>  
 V A R DISCOVERY 2240<sup>PV</sup> YANCOWINNA EXPORT E16<sup>SV</sup>  
 DEER VALLEY RITA 0308<sup>#</sup> YANCOWINNA B173<sup>#</sup>

**Sire: TFAN90 LANDFALL NEW GROUND N90<sup>PV</sup>** **Dam: TFAJ108 LANDFALL ELSA J108<sup>#</sup>**  
 MATAURI REALITY 839<sup>#</sup> HYLINE RIGHT TIME 338<sup>#</sup>  
 LANDFALL ELSA L88<sup>PV</sup> LANDFALL ELSA G777<sup>SV</sup>  
 LANDFALL ELSA J139<sup>#</sup> LANDFALL ELSA X57<sup>#</sup>

### Mid March 2024 TransTasman Angus Cattle Evaluation

TACE	Dir	Dtrs	GL	BW	200 W	400 W	600 W	MCW	Milk	SS	Doc
<b>EBV</b>	<b>-7.3</b>	<b>-0.6</b>	<b>-1.2</b>	<b>+5.5</b>	<b>+64</b>	<b>+116</b>	<b>+150</b>	<b>+130</b>	<b>+14</b>	<b>+5.6</b>	<b>+35</b>
ACC	70%	61%	83%	82%	83%	82%	82%	79%	76%	80%	77%
Perc	96	83	91	81	6	4	5	13	72	1	8

TACE	D t C	CWT	EMA	Rib	Rump	RBV	IMF	NFI-F	Claw	Angle	Leg
<b>EBV</b>	<b>-4.2</b>	<b>+77</b>	<b>+8.8</b>	<b>-0.1</b>	<b>-0.5</b>	<b>+1.1</b>	<b>+1.9</b>	<b>-0.46</b>	<b>+0.88</b>	<b>+0.94</b>	<b>+1.00</b>
ACC	45%	71%	71%	70%	71%	63%	74%	61%	69%	69%	68%
Perc	60	24	23	49	52	16	58	3	58	41	40

### Selection Indexes

\$A	\$A-L
<b>\$220</b>	<b>\$373</b>
31	31

**Traits Observed:** BWT, Genomics

Notes: Purchaser:.....\$:



## Lot 16 ABSOLUTE LEONARDO T610<sup>SV</sup> HRW22T610

DOB: 16/10/2022 Registration Status: **HBR** Mating Type: **Natural** Genetic Status: **AMFU,CAFU,DDFU,NHFU**  
 DEER VALLEY ALL IN<sup>SV</sup> BOOROOMOOKA UNDERTAKEN Y145<sup>PV</sup>  
 LANDFALL LEONARDO L24<sup>PV</sup> KENNY'S CREEK EDGELL E52<sup>PV</sup>  
 LANDFALL JOYLE J527<sup>SV</sup> KENNY'S CREEK BARA S43<sup>#</sup>  
**Sire: TFAP145 LANDFALL LEONARDO P145<sup>SV</sup>** **Dam: NDIJ361 KENNY'S CREEK FINKS PRIDE J361<sup>#</sup>**  
 PRIME JUGGERNAUT J15<sup>SV</sup> L T 598 BANDO 9074<sup>#</sup>  
 LANDFALL ELSA M243<sup>#</sup> KENNY'S CREEK FINKS PRIDE E148<sup>#</sup>  
 LANDFALL ELSA J561<sup>#</sup> KENNY'S CREEK FINKS PRIDE C272<sup>#</sup>

### Mid March 2024 TransTasman Angus Cattle Evaluation

TACE	Dir	Dtrs	GL	BW	200 W	400 W	600 W	MCW	Milk	SS	Doc
<b>EBV</b>	<b>-0.4</b>	<b>-0.5</b>	<b>-3.7</b>	<b>+3.7</b>	<b>+42</b>	<b>+76</b>	<b>+98</b>	<b>+81</b>	<b>+7</b>	<b>+2.0</b>	<b>+14</b>
ACC	54%	45%	64%	71%	66%	64%	64%	63%	56%	61%	57%
Perc	72	82	62	43	87	90	88	81	98	54	77

TACE	D t C	CWT	EMA	Rib	Rump	RBV	IMF	NFI-F	Claw	Angle	Leg
<b>EBV</b>	<b>-4.7</b>	<b>+57</b>	<b>+6.4</b>	<b>+0.9</b>	<b>-0.5</b>	<b>+0.4</b>	<b>+2.8</b>	<b>+0.52</b>	-	-	-
ACC	35%	56%	55%	57%	57%	50%	60%	48%	-	-	-
Perc	47	78	49	27	52	53	35	80	-	-	-

### Selection Indexes

\$A	\$A-L
<b>\$175</b>	<b>\$292</b>
79	86

Traits Observed: BWT

Notes:

Purchaser: ..... \$: .....

## Lot 17 ABSOLUTE LEONARDO T672<sup>SV</sup> HRW22T672

DOB: 22/10/2022 Registration Status: **APR** Mating Type: **Natural** Genetic Status: **AM3%,CAFU,DD2%,NHFU**  
 DEER VALLEY ALL IN<sup>SV</sup> WERNER WESTWARD 357<sup>#</sup>  
 LANDFALL LEONARDO L24<sup>PV</sup> LANDFALL WESTWARD J169<sup>SV</sup>  
 LANDFALL JOYLE J527<sup>SV</sup> LANDFALL E545<sup>#</sup>  
**Sire: TFAP145 LANDFALL LEONARDO P145<sup>SV</sup>** **Dam: HRWM108 ABSOLUTE M108<sup>#</sup>**  
 PRIME JUGGERNAUT J15<sup>SV</sup> LANDFALL EQUATOR G435<sup>SV</sup>  
 LANDFALL ELSA M243<sup>#</sup> LANDFALL J250<sup>#</sup>  
 LANDFALL ELSA J561<sup>#</sup> REDWOOD G20<sup>#</sup>

### Mid March 2024 TransTasman Angus Cattle Evaluation

TACE	Dir	Dtrs	GL	BW	200 W	400 W	600 W	MCW	Milk	SS	Doc
<b>EBV</b>	<b>+0.7</b>	<b>-5.0</b>	<b>-4.4</b>	<b>+4.5</b>	<b>+49</b>	<b>+88</b>	<b>+119</b>	<b>+101</b>	<b>+11</b>	<b>+1.9</b>	<b>+19</b>
ACC	51%	42%	61%	69%	64%	61%	62%	61%	54%	58%	55%
Perc	64	97	50	62	57	63	49	51	90	58	57

TACE	D t C	CWT	EMA	Rib	Rump	RBV	IMF	NFI-F	Claw	Angle	Leg
<b>EBV</b>	<b>-4.7</b>	<b>+69</b>	<b>+7.3</b>	<b>+0.7</b>	<b>-0.7</b>	<b>+0.4</b>	<b>+2.4</b>	<b>+0.39</b>	-	-	-
ACC	31%	53%	53%	55%	55%	48%	58%	46%	-	-	-
Perc	47	43	38	31	56	53	44	69	-	-	-

### Selection Indexes

\$A	\$A-L
<b>\$187</b>	<b>\$320</b>
68	73

Traits Observed: BWT

Notes:

Purchaser: ..... \$: .....

## Lot 18 ABSOLUTE NEWGROUND T505<sup>SV</sup> HRW22T505

DOB: 18/10/2022 Registration Status: **HBR** Mating Type: **AI** Genetic Status: **AMFU,CAFU,DDFU,NHFU**  
 A A R TEN X 7008 S A<sup>SV</sup> RENNYLEA EDMUND E11<sup>PV</sup>  
 V A R DISCOVERY 2240<sup>PV</sup> ARDROSSAN EDMUND K165<sup>PV</sup>  
 DEER VALLEY RITA 0308<sup>#</sup> ARDROSSAN BLACKBIRD D204<sup>SV</sup>  
**Sire: TFAN90 LANDFALL NEW GROUND N90<sup>PV</sup>** **Dam: HRWQ365 ABSOLUTE Q365<sup>#</sup>**  
 MATAURI REALITY 839<sup>#</sup> TE MANIA BERKLEY B1<sup>PV</sup>  
 LANDFALL ELSA L88<sup>PV</sup> TE MANIA WARGOONA H272<sup>SV</sup>  
 LANDFALL ELSA J139<sup>#</sup> TE MANIA WARGOONA E624<sup>#</sup>

### Mid March 2024 TransTasman Angus Cattle Evaluation

TACE	Dir	Dtrs	GL	BW	200 W	400 W	600 W	MCW	Milk	SS	Doc
<b>EBV</b>	<b>+4.4</b>	<b>+2.8</b>	<b>-5.0</b>	<b>+2.2</b>	<b>+45</b>	<b>+88</b>	<b>+114</b>	<b>+122</b>	<b>+10</b>	<b>+4.3</b>	<b>+25</b>
ACC	70%	62%	83%	82%	83%	82%	82%	79%	76%	80%	78%
Perc	31	54	40	15	78	62	62	21	92	4	32

TACE	D t C	CWT	EMA	Rib	Rump	RBV	IMF	NFI-F	Claw	Angle	Leg
<b>EBV</b>	<b>-4.2</b>	<b>+61</b>	<b>+5.5</b>	<b>+1.6</b>	<b>+1.1</b>	<b>+0.3</b>	<b>+2.9</b>	<b>+0.82</b>	-	-	-
ACC	47%	72%	71%	71%	72%	64%	75%	63%	-	-	-
Perc	60	69	60	16	25	60	33	95	-	-	-

### Selection Indexes

\$A	\$A-L
<b>\$176</b>	<b>\$343</b>
78	56

Traits Observed: GL, BWT, Genomics

Notes:

Purchaser: ..... \$: .....

## Lot 19 ABSOLUTE NEWGROUND T515<sup>SV</sup> HRW22T515

DOB: 12/10/2022 Registration Status: **HBR** Mating Type: **Natural** Genetic Status: **AMFU,CAFU,DDFU,NHFU**  
 A A R TEN X 7008 S A<sup>SV</sup> BASIN FRANCHISE P142<sup>#</sup>  
 V A R DISCOVERY 2240<sup>PV</sup> EF COMPLEMENT 8088<sup>PV</sup>  
 DEER VALLEY RITA 0308<sup>#</sup> EF EVERELDA ENTENSE 6117<sup>#</sup>  
**Sire: TFAN90 LANDFALL NEW GROUND N90<sup>PV</sup>** **Dam: HRWN302 ABSOLUTE N302<sup>#</sup>**  
 MATAURI REALITY 839<sup>#</sup> TE MANIA INFINITY 04 379 AB<sup>#</sup>  
 LANDFALL ELSA L88<sup>PV</sup> LANDFALL PARADE J150<sup>#</sup>  
 LANDFALL ELSA J139<sup>#</sup> LANDFALL PARADE G450<sup>#</sup>

### Mid March 2024 TransTasman Angus Cattle Evaluation

TACE	Dir	Dtrs	GL	BW	200 W	400 W	600 W	MCW	Milk	SS	Doc
<b>EBV</b>	<b>+0.4</b>	<b>+5.3</b>	<b>-5.9</b>	<b>+3.3</b>	<b>+51</b>	<b>+99</b>	<b>+129</b>	<b>+116</b>	<b>+17</b>	<b>+5.7</b>	<b>+20</b>
ACC	71%	63%	83%	82%	83%	81%	82%	79%	75%	80%	78%
Perc	66	26	27	34	51	29	28	27	48	1	53

TACE	D t C	CWT	EMA	Rib	Rump	RBV	IMF	NFI-F	Claw	Angle	Leg
<b>EBV</b>	<b>-4.5</b>	<b>+70</b>	<b>+1.8</b>	<b>+2.2</b>	<b>+2.7</b>	<b>-0.4</b>	<b>+1.3</b>	<b>+0.57</b>	-	-	-
ACC	48%	71%	71%	71%	72%	64%	75%	63%	-	-	-
Perc	52	40	93	10	9	90	75	84	-	-	-

### Selection Indexes

\$A	\$A-L
<b>\$173</b>	<b>\$334</b>
80	63

**Traits Observed:** BWT, Genomics

Notes: Purchaser:.....\$:

## Lot 20 ABSOLUTE NEWGROUND T529<sup>SV</sup> HRW22T529

DOB: 20/10/2022 Registration Status: **HBR** Mating Type: **Natural** Genetic Status: **AM3%,CAFU,DDFU,NHFU**  
 A A R TEN X 7008 S A<sup>SV</sup> LAWSONS TANK X1235<sup>#</sup>  
 V A R DISCOVERY 2240<sup>PV</sup> LAWSONS TANK B1155<sup>PV</sup>  
 DEER VALLEY RITA 0308<sup>#</sup> LAWSONS NEW DESIGN 1407 Z1393<sup>SV</sup>  
**Sire: TFAN90 LANDFALL NEW GROUND N90<sup>PV</sup>** **Dam: VLYG481 LAWSONS TANK B1155 G481<sup>#</sup>**  
 MATAURI REALITY 839<sup>#</sup> G A R YIELD GRADE<sup>#</sup>  
 LANDFALL ELSA L88<sup>PV</sup> LAWSONS YIELD GRADE A1879<sup>#</sup>  
 LANDFALL ELSA J139<sup>#</sup> LAWSONS PARAMOUNT W1236<sup>#</sup>

### Mid March 2024 TransTasman Angus Cattle Evaluation

TACE	Dir	Dtrs	GL	BW	200 W	400 W	600 W	MCW	Milk	SS	Doc
<b>EBV</b>	<b>-0.1</b>	<b>+4.4</b>	<b>-4.1</b>	<b>+4.8</b>	<b>+51</b>	<b>+92</b>	<b>+118</b>	<b>+108</b>	<b>+10</b>	<b>+2.4</b>	<b>+4</b>
ACC	57%	50%	67%	69%	66%	64%	65%	64%	59%	62%	59%
Perc	70	36	55	69	50	51	53	40	92	39	97

TACE	D t C	CWT	EMA	Rib	Rump	RBV	IMF	NFI-F	Claw	Angle	Leg
<b>EBV</b>	<b>-5.2</b>	<b>+78</b>	<b>+5.2</b>	<b>+0.6</b>	<b>-0.5</b>	<b>+0.7</b>	<b>+0.8</b>	<b>+0.31</b>	-	-	-
ACC	40%	58%	57%	59%	59%	53%	62%	51%	-	-	-
Perc	35	21	64	33	52	35	85	61	-	-	-

### Selection Indexes

\$A	\$A-L
<b>\$187</b>	<b>\$335</b>
69	62

**Traits Observed:** BWT

Notes: Purchaser:.....\$:

## Lot 21 ABSOLUTE 38 SPECIAL T587<sup>PV</sup> HRW22T587

DOB: 12/11/2022 Registration Status: **HBR** Mating Type: **ET** Genetic Status: **AMFU,CAFU,DDFU,NHFU**  
 EF COMPLEMENT 8088<sup>PV</sup> SITZ UPWARD 307R<sup>SV</sup>  
 EF COMMANDO 1366<sup>PV</sup> THOMAS UP RIVER 1614<sup>PV</sup>  
 RIVERBEND YOUNG LUCY W1470<sup>#</sup> THOMAS CAROL 7595<sup>#</sup>  
**Sire: USA18229487 BALDRIDGE 38 SPECIAL<sup>PV</sup>** **Dam: HRWP804 ABSOLUTE LOWAN P804<sup>PV</sup>**  
 STYLES UPGRADE J59<sup>#</sup> TE MANIA BERKLEY B1<sup>PV</sup>  
 BALDRIDGE ISABEL Y69<sup>#</sup> TE MANIA LOWAN G251<sup>PV</sup>  
 BALDRIDGE ISABEL T935<sup>#</sup> TE MANIA LOWAN Z74<sup>PV</sup>

### Mid March 2024 TransTasman Angus Cattle Evaluation

TACE	Dir	Dtrs	GL	BW	200 W	400 W	600 W	MCW	Milk	SS	Doc
<b>EBV</b>	<b>+6.9</b>	<b>+6.4</b>	<b>-5.2</b>	<b>+4.3</b>	<b>+55</b>	<b>+91</b>	<b>+117</b>	<b>+99</b>	<b>+20</b>	<b>+2.2</b>	<b>+26</b>
ACC	70%	62%	83%	82%	83%	82%	82%	79%	76%	80%	78%
Perc	12	16	37	57	29	54	54	55	26	47	27

TACE	D t C	CWT	EMA	Rib	Rump	RBV	IMF	NFI-F	Claw	Angle	Leg
<b>EBV</b>	<b>-4.6</b>	<b>+59</b>	<b>+3.6</b>	<b>+0.6</b>	<b>-1.5</b>	<b>-0.3</b>	<b>+3.9</b>	<b>+0.48</b>	<b>+0.74</b>	<b>+1.00</b>	<b>+1.02</b>
ACC	47%	72%	72%	71%	72%	64%	75%	63%	72%	72%	69%
Perc	50	75	81	33	70	87	15	77	28	56	46

### Selection Indexes

\$A	\$A-L
<b>\$215</b>	<b>\$371</b>
37	32

**Traits Observed:** BWT, Genomics

Notes: Purchaser:.....\$:



## Lot 23 ABSOLUTE NEWGROUND T618<sup>SV</sup> HRW22T618

DOB: 15/10/2022 Registration Status: **APR** Mating Type: **Natural** Genetic Status: **AMFU,CAFU,DD3%,NHFU**  
 A A R TEN X 7008 S A<sup>SV</sup> WERNER WESTWARD 357\*  
 V A R DISCOVERY 2240<sup>PV</sup> LANDFALL WESTWARD J169<sup>SV</sup>  
 DEER VALLEY RITA 0308\* LANDFALL E545\*  
**Sire: TFAN90 LANDFALL NEW GROUND N90<sup>PV</sup>** **Dam: HRWP101 ABSOLUTE P101<sup>#</sup>**  
 MATAURI REALITY 839\* WILLALOOKA ZAGARI Z353<sup>PV</sup>  
 LANDFALL ELSA L88<sup>PV</sup> WILLALOOKA C963\*  
 LANDFALL ELSA J139\* WILLALOOKA A490\*

### Mid March 2024 TransTasman Angus Cattle Evaluation

TACE	Dir	Dtrs	GL	BW	200 W	400 W	600 W	MCW	Milk	SS	Doc
<b>EBV</b>	<b>+0.8</b>	<b>+3.1</b>	<b>-3.5</b>	<b>+2.5</b>	<b>+50</b>	<b>+95</b>	<b>+117</b>	<b>+92</b>	<b>+16</b>	<b>+4.0</b>	<b>+27</b>
ACC	69%	60%	82%	82%	83%	81%	81%	78%	74%	79%	76%
Perc	63	51	65	19	54	41	54	66	61	6	24

TACE	D t C	CWT	EMA	Rib	Rump	RBV	IMF	NFI-F	Claw	Angle	Leg
<b>EBV</b>	<b>-3.9</b>	<b>+69</b>	<b>+7.8</b>	<b>+2.5</b>	<b>+1.7</b>	<b>+0.3</b>	<b>+3.0</b>	<b>+0.79</b>	-	-	-
ACC	44%	70%	69%	69%	70%	62%	74%	60%	-	-	-
Perc	67	45	32	7	18	60	30	94	-	-	-

### Selection Indexes

\$A	\$A-L
<b>\$213</b>	<b>\$354</b>
39	47

**Traits Observed:** BWT, Genomics

Notes:

Purchaser: ..... \$: .....

## Lot 24 ABSOLUTE NEWGROUND T619<sup>SV</sup> HRW22T619

DOB: 27/10/2022 Registration Status: **HBR** Mating Type: **Natural** Genetic Status: **AMFU,CAFU,DDFU,NHFU**  
 A A R TEN X 7008 S A<sup>SV</sup> TE MANIA BARTEL B219<sup>PV</sup>  
 V A R DISCOVERY 2240<sup>PV</sup> AYRVALE BARTEL E7<sup>PV</sup>  
 DEER VALLEY RITA 0308\* EAGLEHAWK JEDDA B32<sup>SV</sup>  
**Sire: TFAN90 LANDFALL NEW GROUND N90<sup>PV</sup>** **Dam: VLYH1114 LAWSONS BARTEL E7 H1114<sup>#</sup>**  
 MATAURI REALITY 839\* B C C BUSHWACKER 41-93\*  
 LANDFALL ELSA L88<sup>PV</sup> LAWSONS BUSHWACKER Y1398\*  
 LANDFALL ELSA J139\* LAWSONS HENRY VIII W494\*

### Mid March 2024 TransTasman Angus Cattle Evaluation

TACE	Dir	Dtrs	GL	BW	200 W	400 W	600 W	MCW	Milk	SS	Doc
<b>EBV</b>	<b>+1.9</b>	<b>+5.7</b>	<b>-2.3</b>	<b>+4.1</b>	<b>+51</b>	<b>+90</b>	<b>+110</b>	<b>+94</b>	<b>+15</b>	<b>+2.1</b>	<b>+13</b>
ACC	56%	48%	63%	67%	65%	63%	63%	62%	57%	60%	58%
Perc	54	22	81	53	51	57	70	63	66	51	81

TACE	D t C	CWT	EMA	Rib	Rump	RBV	IMF	NFI-F	Claw	Angle	Leg
<b>EBV</b>	<b>-5.2</b>	<b>+73</b>	<b>+4.0</b>	<b>+0.8</b>	<b>+0.7</b>	<b>+0.7</b>	<b>+0.8</b>	<b>+0.30</b>	-	-	-
ACC	38%	56%	56%	57%	57%	51%	60%	49%	-	-	-
Perc	35	32	77	29	31	35	85	60	-	-	-

### Selection Indexes

\$A	\$A-L
<b>\$202</b>	<b>\$346</b>
53	54

**Traits Observed:** BWT

Notes:

Purchaser: ..... \$: .....

## Lot 25 ABSOLUTE NEWGROUND T644<sup>SV</sup> HRW22T644

DOB: 22/10/2022 Registration Status: **HBR** Mating Type: **Natural** Genetic Status: **AMFU,CAFU,DDFU,NHFU**  
 RENNYLEA EDMUND E11<sup>PV</sup> SYDGEN EXCEED 3223<sup>PV</sup>  
 LANDFALL KEYSTONE K132<sup>PV</sup> SYDGEN ENHANCE<sup>SV</sup>  
 LANDFALL ARCHER H807<sup>SV</sup> SYDGEN RITA 2618\*  
**Sire: TFAQ750 LANDFALL KEYSTONE Q750<sup>PV</sup>** **Dam: HRWQ415 ABSOLUTE Q415<sup>#</sup>**  
 MATAURI REALITY 839\* SYDGEN TRUST 6228\*  
 LANDFALL ELSA L88<sup>PV</sup> LANDFALL ELSA J592\*  
 LANDFALL ELSA J139\* LANDFALL ELSA D418\*

### Mid March 2024 TransTasman Angus Cattle Evaluation

TACE	Dir	Dtrs	GL	BW	200 W	400 W	600 W	MCW	Milk	SS	Doc
<b>EBV</b>	<b>-2.1</b>	<b>+4.6</b>	<b>-1.5</b>	<b>+6.1</b>	<b>+43</b>	<b>+76</b>	<b>+103</b>	<b>+85</b>	<b>+14</b>	<b>+2.4</b>	<b>+14</b>
ACC	64%	55%	81%	80%	81%	79%	80%	76%	72%	77%	74%
Perc	82	34	88	89	84	89	82	76	74	39	77

TACE	D t C	CWT	EMA	Rib	Rump	RBV	IMF	NFI-F	Claw	Angle	Leg
<b>EBV</b>	<b>-5.4</b>	<b>+63</b>	<b>+2.0</b>	<b>+2.3</b>	<b>+2.8</b>	<b>-0.3</b>	<b>+1.1</b>	<b>+0.49</b>	-	-	-
ACC	41%	68%	68%	67%	69%	59%	73%	59%	-	-	-
Perc	31	63	92	9	9	87	79	78	-	-	-

### Selection Indexes

\$A	\$A-L
<b>\$155</b>	<b>\$277</b>
90	91

**Traits Observed:** BWT, Genomics

Notes:

Purchaser: ..... \$: .....

## Lot 26 ABSOLUTE NEWGROUND T684<sup>SV</sup> HRW22T684

DOB: 01/11/2022 Registration Status: **HBR** Mating Type: **Natural** Genetic Status: **AMFU,CAFU,DDFU,NHFU**  
 A A R TEN X 7008 S A<sup>SV</sup>  
 V A R DISCOVERY 2240<sup>PV</sup> COONAMBLE Z3<sup>PV</sup>  
 DEER VALLEY RITA 0308<sup>#</sup> COONAMBLE ELEVATOR E11<sup>PV</sup>  
 BANGADANG B31<sup>SV</sup>  
**Sire: TFAN90 LANDFALL NEW GROUND N90<sup>PV</sup>** **Dam: TFAJ679 LANDFALL ARCHER J679<sup>#</sup>**  
 MATAURI REALITY 839<sup>#</sup> LANDFALL COMMANDER C47<sup>SV</sup>  
 LANDFALL ELSA L88<sup>PV</sup> LANDFALL E104<sup>#</sup>  
 LANDFALL ELSA J139<sup>#</sup> LANDFALL ARCHER C313<sup>#</sup>

### Mid March 2024 TransTasman Angus Cattle Evaluation

TACE	Dir	Dtrs	GL	BW	200 W	400 W	600 W	MCW	Milk	SS	Doc
<b>EBV</b>	<b>+3.1</b>	<b>+3.6</b>	<b>-3.0</b>	<b>+3.7</b>	<b>+50</b>	<b>+90</b>	<b>+112</b>	<b>+102</b>	<b>+11</b>	<b>+2.4</b>	<b>+17</b>
ACC	56%	48%	65%	68%	66%	63%	64%	63%	58%	61%	58%
Perc	43	45	72	43	56	55	67	50	90	39	65

TACE	D t C	CWT	EMA	Rib	Rump	RBV	IMF	NFI-F	Claw	Angle	Leg
<b>EBV</b>	<b>-4.0</b>	<b>+73</b>	<b>+5.9</b>	<b>+0.7</b>	<b>+0.7</b>	<b>+0.8</b>	<b>+0.4</b>	<b>+0.24</b>	-	-	-
ACC	37%	56%	56%	57%	57%	51%	60%	49%	-	-	-
Perc	65	34	55	31	31	29	91	53	-	-	-

### Selection Indexes

\$A	\$A-L
<b>\$185</b>	<b>\$332</b>
70	65

Traits Observed: BWT

Notes:

Purchaser: ..... \$: .....

## Lot 27 ABSOLUTE NEWGROUND T695<sup>SV</sup> HRW22T695

DOB: 29/10/2022 Registration Status: **HBR** Mating Type: **Natural** Genetic Status: **AMFU,CAFU,DDFU,NHFU**  
 A A R TEN X 7008 S A<sup>SV</sup>  
 V A R DISCOVERY 2240<sup>PV</sup> SYDGEN TRUST 6228<sup>#</sup>  
 DEER VALLEY RITA 0308<sup>#</sup> SYDGEN BLACK PEARL 2006<sup>PV</sup>  
 SYDGEN ANITA 8611<sup>#</sup>  
**Sire: TFAN90 LANDFALL NEW GROUND N90<sup>PV</sup>** **Dam: HRWM223 ABSOLUTE LOWAN M223<sup>#</sup>**  
 MATAURI REALITY 839<sup>#</sup> G A R ULTIMATE<sup>#</sup>  
 LANDFALL ELSA L88<sup>PV</sup> TE MANIA LOWAN H194<sup>#</sup>  
 LANDFALL ELSA J139<sup>#</sup> TE MANIA LOWAN F463<sup>#</sup>

### Mid March 2024 TransTasman Angus Cattle Evaluation

TACE	Dir	Dtrs	GL	BW	200 W	400 W	600 W	MCW	Milk	SS	Doc
<b>EBV</b>	<b>+2.9</b>	<b>+6.0</b>	<b>-3.5</b>	<b>+3.7</b>	<b>+52</b>	<b>+92</b>	<b>+117</b>	<b>+102</b>	<b>+14</b>	<b>+2.9</b>	<b>+11</b>
ACC	58%	51%	66%	68%	66%	64%	64%	64%	59%	61%	60%
Perc	45	20	65	43	44	51	55	50	76	24	85

TACE	D t C	CWT	EMA	Rib	Rump	RBV	IMF	NFI-F	Claw	Angle	Leg
<b>EBV</b>	<b>-4.7</b>	<b>+75</b>	<b>+4.6</b>	<b>+0.9</b>	<b>+0.2</b>	<b>+0.5</b>	<b>+1.5</b>	<b>+0.29</b>	-	-	-
ACC	40%	57%	57%	59%	59%	53%	62%	51%	-	-	-
Perc	47	28	71	27	40	47	69	59	-	-	-

### Selection Indexes

\$A	\$A-L
<b>\$202</b>	<b>\$354</b>
53	47

Traits Observed: BWT

Notes:

Purchaser: ..... \$: .....

## Lot 28 ABSOLUTE NEWGROUND T698<sup>SV</sup> HRW22T698

DOB: 21/10/2022 Registration Status: **HBR** Mating Type: **Natural** Genetic Status: **AMFU,CAFU,DDFU,NHFU**  
 A A R TEN X 7008 S A<sup>SV</sup>  
 V A R DISCOVERY 2240<sup>PV</sup> BASIN FRANCHISE P142<sup>#</sup>  
 DEER VALLEY RITA 0308<sup>#</sup> EF COMPLEMENT 8088<sup>PV</sup>  
 EF EVERELDA ENTENSE 6117<sup>#</sup>  
**Sire: TFAN90 LANDFALL NEW GROUND N90<sup>PV</sup>** **Dam: HRWN295 ABSOLUTE N295<sup>#</sup>**  
 MATAURI REALITY 839<sup>#</sup> B/R NEW DAY 454<sup>#</sup>  
 LANDFALL ELSA L88<sup>PV</sup> WATTLETOP J102<sup>#</sup>  
 LANDFALL ELSA J139<sup>#</sup> WATTLETOP USUAL F308<sup>#</sup>

### Mid March 2024 TransTasman Angus Cattle Evaluation

TACE	Dir	Dtrs	GL	BW	200 W	400 W	600 W	MCW	Milk	SS	Doc
<b>EBV</b>	<b>+7.5</b>	<b>+7.5</b>	<b>-8.8</b>	<b>+2.4</b>	<b>+49</b>	<b>+90</b>	<b>+112</b>	<b>+86</b>	<b>+16</b>	<b>+2.2</b>	<b>+19</b>
ACC	57%	50%	66%	68%	65%	63%	63%	63%	58%	60%	58%
Perc	9	9	5	18	59	57	67	75	58	47	55

TACE	D t C	CWT	EMA	Rib	Rump	RBV	IMF	NFI-F	Claw	Angle	Leg
<b>EBV</b>	<b>-5.1</b>	<b>+74</b>	<b>+5.6</b>	<b>+1.2</b>	<b>+1.0</b>	<b>+0.3</b>	<b>+1.4</b>	<b>+0.57</b>	-	-	-
ACC	39%	56%	56%	57%	58%	52%	60%	50%	-	-	-
Perc	37	29	59	21	27	60	72	84	-	-	-

### Selection Indexes

\$A	\$A-L
<b>\$215</b>	<b>\$368</b>
37	35

Traits Observed: BWT

Notes:

Purchaser: ..... \$: .....

## Lot 29 ABSOLUTE RIMFIRE T975<sup>SV</sup> HRW22T975

DOB: 03/11/2022 Registration Status: APR Mating Type: Natural Genetic Status: AMFU,CAFU,DD30%,NHFU  
 TEHAMA REVERE<sup>#</sup> V A R DISCOVERY 2240<sup>PV</sup>  
 S POWERPOINT WS 5503<sup>PV</sup> LANDFALL NEW GROUND N90<sup>PV</sup>  
 S QUEEN ESSA 248<sup>#</sup> LANDFALL ELSA L88<sup>PV</sup>  
**Sire: NJWR1023 MILWILLAH RIMFIRE R1023<sup>PV</sup>** **Dam: HRWR03 ABSOLUTE R03<sup>#</sup>**  
 MATAURI REALITY 839<sup>#</sup> LAWSONS DINKY-DI Z191<sup>SV</sup>  
 MILWILLAH BARUNAH K26<sup>SV</sup> LAWSONS DINKY-DI D912<sup>#</sup>  
 MILWILLAH BARUNAH F2<sup>#</sup> LAWSONS YIELD GRADE A1459<sup>#</sup>

### Mid March 2024 TransTasman Angus Cattle Evaluation

TACE	Dir	Dtrs	GL	BW	200 W	400 W	600 W	MCW	Milk	SS	Doc
EBV	-6.7	+1.0	-2.3	+6.6	+61	+95	+127	+120	+11	+2.4	+21
ACC	64%	53%	81%	81%	82%	79%	80%	76%	71%	77%	73%
Perc	95	72	81	93	12	42	33	23	91	39	49

TACE	D t C	CWT	EMA	Rib	Rump	RBV	IMF	NFI-F	Claw	Angle	Leg
EBV	-5.6	+78	+8.2	-0.3	+0.4	+0.7	+0.5	+0.40	+0.60	+0.68	+1.00
ACC	39%	67%	67%	67%	68%	58%	71%	57%	66%	66%	61%
Perc	27	20	28	53	36	35	90	70	9	3	40

### Selection Indexes

\$A	\$A-L
\$194	\$332
62	64

Traits Observed: BWT, Genomics

Notes:

Purchaser: ..... \$: .....

## Lot 30 ABSOLUTE MAGIC T502<sup>SV</sup> HRW22T502

DOB: 10/10/2022 Registration Status: HBR Mating Type: Natural Genetic Status: AMFU,CAFU,DDFU,NHFU  
 WMR TIMELESS 458<sup>#</sup> WMR TIMELESS 458<sup>#</sup>  
 GDAR REGULATOR 364<sup>PV</sup> GDAR REGULATOR 364<sup>PV</sup>  
 GDAR BLACKCAP LADY 071<sup>#</sup> GDAR BLACKCAP LADY 071<sup>#</sup>  
**Sire: HRWP124 ABSOLUTE PURE MAGIC P124<sup>PV</sup>** **Dam: HRWP97 ABSOLUTE LOWAN P97<sup>#</sup>**  
 WATTLETOP FRANKLIN G188<sup>SV</sup> VERMONT DREAMLINE B107<sup>PV</sup>  
 WATTLETOP J397<sup>SV</sup> ABSOLUTE LOWAN F1<sup>#</sup>  
 WATTLETOP DANDLOO G30<sup>#</sup> VERMONT LOWAN Z373<sup>#</sup>

### Mid March 2024 TransTasman Angus Cattle Evaluation

TACE	Dir	Dtrs	GL	BW	200 W	400 W	600 W	MCW	Milk	SS	Doc
EBV	-2.3	+3.0	-7.0	+5.7	+60	+109	+141	+131	+12	+4.0	+28
ACC	62%	54%	82%	72%	69%	67%	67%	67%	62%	64%	63%
Perc	82	52	15	84	13	10	12	13	87	6	22

TACE	D t C	CWT	EMA	Rib	Rump	RBV	IMF	NFI-F	Claw	Angle	Leg
EBV	-4.3	+74	+8.0	+0.8	+1.3	+0.3	+1.7	+0.40	-	-	-
ACC	42%	60%	60%	62%	62%	58%	62%	51%	-	-	-
Perc	57	29	30	29	22	60	64	70	-	-	-

### Selection Indexes

\$A	\$A-L
\$209	\$375
43	30

Traits Observed: GL,BWT

Notes:

Purchaser: ..... \$: .....

## Lot 31 ABSOLUTE KEYSTONE T536<sup>SV</sup> HRW22T536

DOB: 14/10/2022 Registration Status: HBR Mating Type: Natural Genetic Status: AMFU,CAFU,DDFU,NHFU  
 RENNYLEA EDMUND E11<sup>PV</sup> CONNEALY CAPITALIST 028<sup>#</sup>  
 LANDFALL KEYSTONE K132<sup>PV</sup> LD CAPITALIST 316<sup>PV</sup>  
 LANDFALL ARCHER H807<sup>SV</sup> LD DIXIE ERICA 2053<sup>#</sup>  
**Sire: TFAQ750 LANDFALL KEYSTONE Q750<sup>PV</sup>** **Dam: HRWP35 ABSOLUTE USUAL P35<sup>#</sup>**  
 MATAURI REALITY 839<sup>#</sup> B/R NEW DAY 454<sup>#</sup>  
 LANDFALL ELSA L88<sup>PV</sup> WATTLETOP J102<sup>#</sup>  
 LANDFALL ELSA J139<sup>#</sup> WATTLETOP USUAL F308<sup>#</sup>

### Mid March 2024 TransTasman Angus Cattle Evaluation

TACE	Dir	Dtrs	GL	BW	200 W	400 W	600 W	MCW	Milk	SS	Doc
EBV	+1.5	+3.5	-3.7	+4.2	+54	+102	+131	+111	+12	+4.1	+24
ACC	65%	58%	82%	73%	70%	69%	69%	69%	64%	66%	66%
Perc	58	46	62	55	34	23	25	35	84	5	36

TACE	D t C	CWT	EMA	Rib	Rump	RBV	IMF	NFI-F	Claw	Angle	Leg
EBV	-2.9	+71	+10.3	+0.7	+0.6	+0.5	+2.5	+0.52	-	-	-
ACC	45%	62%	62%	64%	63%	59%	65%	54%	-	-	-
Perc	85	38	12	31	33	47	42	80	-	-	-

### Selection Indexes

\$A	\$A-L
\$211	\$365
42	37

Traits Observed: GL,BWT

Notes:

Purchaser: ..... \$: .....

## Lot 32

## ABSOLUTE PACIFIC T580<sup>PV</sup>

## HRW22T580

DOB: 14/11/2022

Registration Status: HBR

Mating Type: ET

Genetic Status: AMFU,CAFU,DDFU,NHFU

MOGCK BULLSEYE<sup>PV</sup>  
 HOOVER NO DOUBT<sup>PV</sup>  
 MISS BLACKCAP ELLSTON J2<sup>#</sup>

RITO 707 OF IDEAL 3407 7075<sup>#</sup>  
 S A V RESOURCE 1441<sup>PV</sup>  
 S A V BLACKCAP MAY 4136<sup>#</sup>

Sire: USA19444025 STERLING PACIFIC 904<sup>PV</sup>

Dam: HRWM242 ABSOLUTE BOORTKOI M242<sup>SV</sup>

G A R PROPHET<sup>SV</sup>  
 BALDRIDGE ISABEL B082<sup>#</sup>  
 BALDRIDGE ISABEL Y69<sup>#</sup>

TE MANIA FORGO F893<sup>PV</sup>  
 TE MANIA BOORTKOI H869<sup>SV</sup>  
 TE MANIA BOORTKOI E891<sup>#</sup>

### Mid March 2024 TransTasman Angus Cattle Evaluation

TACE	Dir	Dtrs	GL	BW	200 W	400 W	600 W	MCW	Milk	SS	Doc
EBV	-4.0	-0.3	-5.0	+4.6	+59	+99	+122	+114	+12	+0.4	+30
ACC	65%	53%	82%	82%	83%	81%	81%	77%	72%	79%	76%
Perc	89	81	40	64	16	29	43	31	85	95	17

TACE	D t C	CWT	EMA	Rib	Rump	RBV	IMF	NFI-F	Claw	Angle	Leg
EBV	-4.8	+62	+6.5	+0.7	+0.1	-0.1	+2.6	-0.53	+0.76	+0.72	+0.80
ACC	40%	69%	70%	69%	70%	61%	73%	59%	72%	72%	67%
Perc	45	64	48	31	41	81	39	2	32	5	4

### Selection Indexes

\$A	\$A-L
\$203	\$343
51	56

Traits Observed: BWT, Genomics

Notes:

Purchaser: ..... \$:

## Lot 33

## ABSOLUTE LEONARDO T900<sup>SV</sup>

## HRW22T900

DOB: 22/10/2022

Registration Status: APR

Mating Type: Natural

Genetic Status: AMFU,CAFU,DDFU,NHFU

DEER VALLEY ALL IN<sup>SV</sup>  
 LANDFALL LEONARDO L24<sup>PV</sup>  
 LANDFALL JOYLE J527<sup>SV</sup>

RENNYLEA EDMUND E11<sup>PV</sup>  
 LANDFALL KEYSTONE K132<sup>PV</sup>  
 LANDFALL ARCHER H807<sup>SV</sup>

Sire: TFAP145 LANDFALL LEONARDO P145<sup>SV</sup>

Dam: HRWR10 ABSOLUTE KERRY R10<sup>#</sup>

PRIME JUGGERNAUT J15<sup>SV</sup>  
 LANDFALL ELSA M243<sup>#</sup>  
 LANDFALL ELSA J561<sup>#</sup>

SILVEIRAS M811 TOTAL 6103<sup>#</sup>  
 WATTLETOP J89<sup>#</sup>  
 WATTLETOP KERRY A401<sup>#</sup>

### Mid March 2024 TransTasman Angus Cattle Evaluation

TACE	Dir	Dtrs	GL	BW	200 W	400 W	600 W	MCW	Milk	SS	Doc
EBV	+10.5	+2.6	-10.8	-0.2	+33	+83	+103	+78	+15	+1.1	+14
ACC	67%	58%	83%	82%	83%	81%	82%	78%	74%	79%	77%
Perc	1	56	1	2	99	77	82	84	63	84	78

TACE	D t C	CWT	EMA	Rib	Rump	RBV	IMF	NFI-F	Claw	Angle	Leg
EBV	-8.7	+65	+0.6	+5.9	+6.3	-1.5	+3.2	+0.84	+0.92	+1.30	+1.04
ACC	41%	69%	69%	69%	70%	62%	73%	59%	68%	68%	67%
Perc	2	56	97	1	1	99	26	95	66	97	53

### Selection Indexes

\$A	\$A-L
\$199	\$353
55	48

Traits Observed: BWT, Genomics

Notes:

Purchaser: ..... \$:

## Lot 34

## ABSOLUTE NEWGROUND T683<sup>SV</sup>

## HRW22T683

DOB: 26/10/2022

Registration Status: HBR

Mating Type: Natural

Genetic Status: AMFU,CAFU,DDFU,NHFU

A A R TEN X 7008 S A<sup>SV</sup>  
 V A R DISCOVERY 2240<sup>PV</sup>  
 DEER VALLEY RITA 0308<sup>#</sup>

RENNYLEA EDMUND E11<sup>PV</sup>  
 ARDROSSAN EDMUND K165<sup>PV</sup>  
 ARDROSSAN BLACKBIRD D204<sup>SV</sup>

Sire: TFAN90 LANDFALL NEW GROUND N90<sup>PV</sup>

Dam: HRWQ356 ABSOLUTE Q356<sup>#</sup>

MATAURI REALITY 839<sup>#</sup>  
 LANDFALL ELSA L88<sup>PV</sup>  
 LANDFALL ELSA J139<sup>#</sup>

LANDFALL EVERLAST D66<sup>SV</sup>  
 LANDFALL JOYLE J177<sup>#</sup>  
 LANDFALL JOYLE G21 G021<sup>#</sup>

### Mid March 2024 TransTasman Angus Cattle Evaluation

TACE	Dir	Dtrs	GL	BW	200 W	400 W	600 W	MCW	Milk	SS	Doc
EBV	-1.7	+1.1	-6.2	+2.6	+50	+102	+130	+123	+4	+3.3	+32
ACC	69%	60%	82%	81%	83%	81%	81%	78%	75%	79%	76%
Perc	80	71	23	21	56	23	27	20	99	15	13

TACE	D t C	CWT	EMA	Rib	Rump	RBV	IMF	NFI-F	Claw	Angle	Leg
EBV	-4.8	+74	+9.3	+2.4	+2.0	+0.4	+2.6	+0.98	-	-	-
ACC	44%	70%	70%	70%	71%	63%	74%	61%	-	-	-
Perc	45	30	19	8	15	53	39	98	-	-	-

### Selection Indexes

\$A	\$A-L
\$206	\$369
47	34

Traits Observed: BWT, Genomics

Notes:

Purchaser: ..... \$:

## Lot 35 ABSOLUTE NEWGROUND T736<sup>SV</sup> HRW22T736

DOB: 05/11/2022 Registration Status: **HBR** Mating Type: **Natural** Genetic Status: **AMFU,CA25%,DDFU,NHFU**  
 A A R TEN X 7008 S A<sup>SV</sup> TE MANIA BERKLEY B1<sup>PV</sup>  
 V A R DISCOVERY 2240<sup>PV</sup> TE MANIA EMPEROR E343<sup>PV</sup>  
 DEER VALLEY RITA 0308<sup>#</sup> TE MANIA LOWAN Z74<sup>PV</sup>

**Sire: TFAN90 LANDFALL NEW GROUND N90<sup>PV</sup>** **Dam: HRWH19 ABSOLUTE WARGOONA H19<sup>#</sup>**  
 MATAURI REALITY 839<sup>#</sup> ARDROSSAN MODEST W37<sup>SV</sup>  
 LANDFALL ELSA L88<sup>PV</sup> TE MANIA WARGOONA A202<sup>#</sup>  
 LANDFALL ELSA J139<sup>#</sup> TE MANIA WARGOONA Y81<sup>#</sup>

### Mid March 2024 TransTasman Angus Cattle Evaluation

TACE	Dir	Dtrs	GL	BW	200 W	400 W	600 W	MCW	Milk	SS	Doc
<b>EBV</b>	<b>+1.9</b>	<b>+1.6</b>	<b>-5.2</b>	<b>+2.8</b>	<b>+45</b>	<b>+84</b>	<b>+104</b>	<b>+89</b>	<b>+11</b>	<b>+3.9</b>	<b>+20</b>
ACC	71%	63%	83%	82%	83%	82%	82%	80%	76%	80%	78%
Perc	54	66	37	24	79	74	80	71	90	7	51

TACE	D t C	CWT	EMA	Rib	Rump	RBV	IMF	NFI-F	Claw	Angle	Leg
<b>EBV</b>	<b>-2.5</b>	<b>+54</b>	<b>+10.4</b>	<b>+2.8</b>	<b>+4.8</b>	<b>+0.1</b>	<b>+2.8</b>	<b>+1.05</b>	<b>+0.46</b>	<b>+0.48</b>	<b>+0.60</b>
ACC	48%	72%	71%	71%	72%	64%	75%	63%	70%	70%	68%
Perc	90	84	12	6	2	71	35	99	2	1	1

### Selection Indexes

\$A	\$A-L
<b>\$189</b>	<b>\$322</b>
66	72

Traits Observed: BWT, Genomics

Notes:

Purchaser: ..... \$:

## Lot 36 ABSOLUTE NEWGROUND T662<sup>#</sup> HRW22T662

DOB: 20/10/2022 Registration Status: **HBR** Mating Type: **AI** Genetic Status: **AMFU,CAFU,DDFU,NHFU**  
 A A R TEN X 7008 S A<sup>SV</sup> BOOROOMOOKA UNDERTAKEN Y145<sup>PV</sup>  
 V A R DISCOVERY 2240<sup>PV</sup> RENNYLEA EDMUND E11<sup>PV</sup>  
 DEER VALLEY RITA 0308<sup>#</sup> LAWSONS HENRY VIII Y5<sup>SV</sup>

**Sire: TFAN90 LANDFALL NEW GROUND N90<sup>PV</sup>** **Dam: HRWL58 ABSOLUTE BARA L58<sup>#</sup>**  
 MATAURI REALITY 839<sup>#</sup> LEACHMAN BOOM TIME<sup>#</sup>  
 LANDFALL ELSA L88<sup>PV</sup> KENNY'S CREEK D106<sup>PV</sup>  
 LANDFALL ELSA J139<sup>#</sup> KENNY'S CREEK BARA A612<sup>PV</sup>

### Mid March 2024 TransTasman Angus Cattle Evaluation

TACE	Dir	Dtrs	GL	BW	200 W	400 W	600 W	MCW	Milk	SS	Doc
<b>EBV</b>	<b>+1.5</b>	<b>-1.7</b>	<b>-2.9</b>	<b>+3.3</b>	<b>+49</b>	<b>+92</b>	<b>+118</b>	<b>+105</b>	<b>+11</b>	<b>+4.4</b>	<b>+29</b>
ACC	64%	57%	82%	72%	70%	68%	69%	68%	64%	66%	65%
Perc	58	88	74	34	61	51	53	45	89	4	19

TACE	D t C	CWT	EMA	Rib	Rump	RBV	IMF	NFI-F	Claw	Angle	Leg
<b>EBV</b>	<b>-3.9</b>	<b>+60</b>	<b>+10.5</b>	<b>+1.1</b>	<b>+1.0</b>	<b>+0.9</b>	<b>+2.5</b>	<b>+0.62</b>	-	-	-
ACC	45%	62%	62%	63%	63%	59%	65%	54%	-	-	-
Perc	67	72	11	23	27	24	42	87	-	-	-

### Selection Indexes

\$A	\$A-L
<b>\$204</b>	<b>\$350</b>
50	50

Traits Observed: GL,BWT

Notes:

Purchaser: ..... \$:

## Lot 37 ABSOLUTE NEWGROUND T677<sup>SV</sup> HRW22T677

DOB: 22/10/2022 Registration Status: **HBR** Mating Type: **Natural** Genetic Status:  
 A A R TEN X 7008 S A<sup>SV</sup> BOOROOMOOKA UNDERTAKEN Y145<sup>PV</sup>  
 V A R DISCOVERY 2240<sup>PV</sup> RENNYLEA EDMUND E11<sup>PV</sup>  
 DEER VALLEY RITA 0308<sup>#</sup> LAWSONS HENRY VIII Y5<sup>SV</sup>

**Sire: TFAN90 LANDFALL NEW GROUND N90<sup>PV</sup>** **Dam: HRWK14 ABSOLUTE DANDLOO K14<sup>#</sup>**  
 MATAURI REALITY 839<sup>#</sup> TE MANIA EMPEROR E343<sup>PV</sup>  
 LANDFALL ELSA L88<sup>PV</sup> TE MANIA DANDLOO H296<sup>SV</sup>  
 LANDFALL ELSA J139<sup>#</sup> TE MANIA DANDLOO B76<sup>PV</sup>

### Mid March 2024 TransTasman Angus Cattle Evaluation

TACE	Dir	Dtrs	GL	BW	200 W	400 W	600 W	MCW	Milk	SS	Doc
<b>EBV</b>	-	-	-	-	-	-	-	-	-	-	-
ACC	-	-	-	-	-	-	-	-	-	-	-
Perc	-	-	-	-	-	-	-	-	-	-	-

TACE	D t C	CWT	EMA	Rib	Rump	RBV	IMF	NFI-F	Claw	Angle	Leg
<b>EBV</b>	-	-	-	-	-	-	-	-	-	-	-
ACC	-	-	-	-	-	-	-	-	-	-	-
Perc	-	-	-	-	-	-	-	-	-	-	-

### Selection Indexes

\$A	\$A-L
-	-
-	-

DATA AVAILABLE ON SALE DAY

Notes:

Purchaser: ..... \$:

## Lot 38

## ABSOLUTE NEWGROUND T693<sup>SV</sup>

## HRW22T693

DOB: 28/10/2022

Registration Status: APR

Mating Type: Natural

Genetic Status:

AAR TEN X 7008 SA<sup>SV</sup>  
 VAR DISCOVERY 2240<sup>PV</sup>  
 DEER VALLEY RITA 0308<sup>#</sup>

TE MANIA INFINITY 04 379 AB<sup>#</sup>  
 LANDFALL EVERLAST D66<sup>SV</sup>  
 LANDFALL B446<sup>SV</sup>

Sire: TFAN90 LANDFALL NEW GROUND N90<sup>PV</sup>

Dam: TFAJ545 LANDFALL ARCHER J545<sup>#</sup>

MATAURI REALITY 839<sup>#</sup>  
 LANDFALL ELSA L88<sup>PV</sup>  
 LANDFALL ELSA J139<sup>#</sup>

CLUNIE RANGE XTRACTOR X60<sup>SV</sup>  
 LANDFALL E312<sup>#</sup>  
 LANDFALL B159<sup>#</sup>

### Mid March 2024 TransTasman Angus Cattle Evaluation

TACE	Dir	Dtrs	GL	BW	200 W	400 W	600 W	MCW	Milk	SS	Doc
EBV	-	-	-	-	-	-	-	-	-	-	-
ACC	-	-	-	-	-	-	-	-	-	-	-
Perc	-	-	-	-	-	-	-	-	-	-	-

TACE	D t C	CWT	EMA	Rib	Rump	RBV	IMF	NFI-F	Claw	Angle	Leg
<b>DATA AVAILABLE ON SALE DAY</b>											
Perc	-	-	-	-	-	-	-	-	-	-	-

### Selection Indexes

\$A	\$A-L
-	-
-	-

Notes:

Purchaser: ..... \$:

## Lot 39

## ABSOLUTE RIMFIRE T908<sup>SV</sup>

## HRW22T908

DOB: 29/10/2022

Registration Status: APR

Mating Type: Natural

Genetic Status:

TEHAMA REVERE<sup>#</sup>  
 S POWERPOINT WS 5503<sup>PV</sup>  
 S QUEEN ESSA 248<sup>#</sup>

C R A BEXTOR 872 5205 608<sup>#</sup>  
 TC ABERDEEN 759<sup>SV</sup>  
 TC BLACKBIRD 4034<sup>#</sup>

Sire: NJWR1023 MILWILLAH RIMFIRE R1023<sup>PV</sup>

Dam: TFAL748 LANDFALL ELSA L748<sup>#</sup>

MATAURI REALITY 839<sup>#</sup>  
 MILWILLAH BARUNAH K26<sup>SV</sup>  
 MILWILLAH BARUNAH F2<sup>#</sup>

SITZ UPWARD 307R<sup>SV</sup>  
 LANDFALL ELSA H476<sup>#</sup>  
 LANDFALL ELSA E142<sup>#</sup>

### Mid March 2024 TransTasman Angus Cattle Evaluation

TACE	Dir	Dtrs	GL	BW	200 W	400 W	600 W	MCW	Milk	SS	Doc
EBV	-	-	-	-	-	-	-	-	-	-	-
ACC	-	-	-	-	-	-	-	-	-	-	-
Perc	-	-	-	-	-	-	-	-	-	-	-

TACE	D t C	CWT	EMA	Rib	Rump	RBV	IMF	NFI-F	Claw	Angle	Leg
<b>DATA AVAILABLE ON SALE DAY</b>											
Perc	-	-	-	-	-	-	-	-	-	-	-

### Selection Indexes

\$A	\$A-L
-	-
-	-

Notes:

Purchaser: ..... \$:

## Lot 40

## ABSOLUTE RIMFIRE T943<sup>SV</sup>

## HRW22T943

DOB: 17/10/2022

Registration Status: HBR

Mating Type: Natural

Genetic Status: AMFU,CAFU,DDFU,NHFU

TEHAMA REVERE<sup>#</sup>  
 S POWERPOINT WS 5503<sup>PV</sup>  
 S QUEEN ESSA 248<sup>#</sup>

S A F 598 BANDO 5175<sup>#</sup>  
 BANQUET ABODE A005<sup>PV</sup>  
 BANQUET NANNY V44<sup>#</sup>

Sire: NJWR1023 MILWILLAH RIMFIRE R1023<sup>PV</sup>

Dam: NFJG87 FORRES WILCOOLA G87<sup>#</sup>

MATAURI REALITY 839<sup>#</sup>  
 MILWILLAH BARUNAH K26<sup>SV</sup>  
 MILWILLAH BARUNAH F2<sup>#</sup>

LOCHTON Y003<sup>#</sup>  
 FORRES WILCOOLA A18<sup>SV</sup>  
 LOCHTON Y004<sup>#</sup>

### Mid March 2024 TransTasman Angus Cattle Evaluation

TACE	Dir	Dtrs	GL	BW	200 W	400 W	600 W	MCW	Milk	SS	Doc
EBV	+5.9	+7.5	-8.0	+5.6	+52	+91	+113	+98	+10	+0.0	+17
ACC	64%	53%	81%	81%	82%	80%	80%	76%	71%	77%	72%
Perc	18	9	8	83	45	54	64	56	92	98	63

TACE	D t C	CWT	EMA	Rib	Rump	RBV	IMF	NFI-F	Claw	Angle	Leg
EBV	-5.7	+69	+4.7	+3.7	+4.5	-0.2	+0.5	+0.35	+0.74	+1.00	+0.86
ACC	39%	68%	67%	67%	68%	59%	72%	58%	65%	65%	59%
Perc	25	45	70	2	3	84	90	65	28	56	8

### Selection Indexes

\$A	\$A-L
\$217	\$376
35	29

Traits Observed: BWT, Genomics

Notes:

Purchaser: ..... \$:



## Lot 41 ABSOLUTE T946<sup>SV</sup> HRW22T946

DOB: 12/10/2022 Registration Status: **HBR** Mating Type: **Natural** Genetic Status:

V A R DISCOVERY 2240<sup>PV</sup> CONNEALY CAPITALIST 026<sup>#</sup>  
 LANDFALL DISCOVERY N241<sup>SV</sup> LD CAPITALIST 316<sup>PV</sup>  
 LANDFALL ELSA L53<sup>#</sup> LD DIXIE ERICA 2053<sup>#</sup>

**Sire: TFAQ543 LANDFALL Q543<sup>SV</sup>** **Dam: HRWP32 ABSOLUTE BARA P32<sup>#</sup>**  
 RENNYLEA EDMUND E11<sup>PV</sup> KM BROKEN BOW 002<sup>PV</sup>  
 LANDFALL FEARLESS N1047<sup>PV</sup> KENNY'S CREEK BARA J243<sup>#</sup>  
 LANDFALL EMIT K204<sup>PV</sup> KENNY'S CREEK BARA F447<sup>SV</sup>

### Mid March 2024 TransTasman Angus Cattle Evaluation

TACE	Dir	Dtrs	GL	BW	200 W	400 W	600 W	MCW	Milk	SS	Doc
EBV	-	-	-	-	-	-	-	-	-	-	-
ACC	-	-	-	-	-	-	-	-	-	-	-
Perc	-	-	-	-	-	-	-	-	-	-	-

TACE	D t C	CWT	EMA	Rib	Rump	RBV	IMF	NFI-F	Claw	Angle	Leg
<b>DATA AVAILABLE ON SALE DAY</b>											
Perc	-	-	-	-	-	-	-	-	-	-	-

### Selection Indexes

\$A	\$A-L
-	-
-	-

Notes:

Purchaser: ..... \$: .....

## Lot 42 ABSOLUTE RIMFIRE T968<sup>SV</sup> HRW22T968

DOB: 22/10/2022 Registration Status: **APR** Mating Type: **Natural** Genetic Status:

TEHAMA REVERE<sup>#</sup> RENNYLEA EDMUND E11<sup>PV</sup>  
 S POWERPOINT WS 5503<sup>PV</sup> LANDFALL KEYSTONE K132<sup>PV</sup>  
 S QUEEN ESSA 248<sup>#</sup> LANDFALL ARCHER H807<sup>SV</sup>

**Sire: NJWR1023 MILWILLAH RIMFIRE R1023<sup>PV</sup>** **Dam: HRWR20 ABSOLUTE YELENA R20<sup>#</sup>**  
 MATAURI REALITY 839<sup>#</sup> LANDFALL RIGHT TIME 24J G265<sup>SV</sup>  
 MILWILLAH BARUNAH K26<sup>SV</sup> LANDFALL YELENA J961<sup>#</sup>  
 MILWILLAH BARUNAH F2<sup>#</sup> LANDFALL YELENA F717<sup>#</sup>

### Mid March 2024 TransTasman Angus Cattle Evaluation

TACE	Dir	Dtrs	GL	BW	200 W	400 W	600 W	MCW	Milk	SS	Doc
EBV	-	-	-	-	-	-	-	-	-	-	-
ACC	-	-	-	-	-	-	-	-	-	-	-
Perc	-	-	-	-	-	-	-	-	-	-	-

TACE	D t C	CWT	EMA	Rib	Rump	RBV	IMF	NFI-F	Claw	Angle	Leg
<b>DATA AVAILABLE ON SALE DAY</b>											
Perc	-	-	-	-	-	-	-	-	-	-	-

### Selection Indexes

\$A	\$A-L
-	-
-	-

Notes:

Purchaser: ..... \$: .....

## Lot 43 ABSOLUTE NEWGROUND T631<sup>SV</sup> HRW22T631

DOB: 22/10/2022 Registration Status: **HBR** Mating Type: **Natural** Genetic Status: **AMFU,CAFU,DDFU,NHFU**

A A R TEN X 7008 S A<sup>SV</sup> TEHAMA TOTAL M811<sup>#</sup>  
 V A R DISCOVERY 2240<sup>PV</sup> SILVEIRAS M811 TOTAL 6103<sup>#</sup>  
 DEER VALLEY RITA 0308<sup>#</sup> SILVEIRA ELBA 3309<sup>#</sup>

**Sire: TFAN90 LANDFALL NEW GROUND N90<sup>PV</sup>** **Dam: NWPJ89 WATTLETOP J89<sup>#</sup>**  
 MATAURI REALITY 839<sup>#</sup> LAWSONS NEW DESIGN 1407 Y64<sup>#</sup>  
 LANDFALL ELSA L88<sup>PV</sup> WATTLETOP KERRY A401<sup>#</sup>  
 LANDFALL ELSA J139<sup>#</sup> WATTLETOP KERRY Y82<sup>#</sup>

### Mid March 2024 TransTasman Angus Cattle Evaluation

TACE	Dir	Dtrs	GL	BW	200 W	400 W	600 W	MCW	Milk	SS	Doc
EBV	<b>+0.9</b>	<b>+3.4</b>	<b>-3.4</b>	<b>+3.1</b>	<b>+48</b>	<b>+84</b>	<b>+101</b>	<b>+91</b>	<b>+15</b>	<b>+2.4</b>	<b>+13</b>
ACC	56%	48%	66%	69%	66%	64%	65%	63%	58%	61%	57%
Perc	63	47	66	30	67	73	85	67	69	39	80

TACE	D t C	CWT	EMA	Rib	Rump	RBV	IMF	NFI-F	Claw	Angle	Leg
EBV	<b>-4.7</b>	<b>+70</b>	<b>+3.2</b>	<b>+1.2</b>	<b>+0.9</b>	<b>+0.3</b>	<b>+1.2</b>	<b>+0.42</b>	-	-	-
ACC	36%	56%	56%	58%	58%	52%	60%	48%	-	-	-
Perc	47	43	85	21	28	60	77	72	-	-	-

### Selection Indexes

\$A	\$A-L
<b>\$176</b>	<b>\$309</b>
78	79

Traits Observed: BWT

Notes:

Purchaser: ..... \$: .....

**ALEX SCOTT  
AND STAFF**

CLASSIC GOOD SERVICE  
— SINCE —  
**1886**

*Est. 1886*

## Your local livestock specialists

Our Livestock Agents tailored advice and specialised knowledge across a range of products and industries helps your livestock deliver the best financial return for your hard work.

Talk to an agent in your area today for all your Rural needs.

95 Main Street, Pakenham

David Setches 0409 443 473 - Glenn Barwick 0408 975 476

Tim Gibson 0420 306 599 - Les Ingram 0409 443 133

Accredited Member  
**rma network.**



## Family owned & operated with 20+ years experience

### Why use Hannasky Livestock Carriers?

- 3 Kenworth Prime Movers with B Doubles (sheep & cattle configuration) Plus 1 tray truck and trailer.
- Australia wide transporters including Victoria, New South Wales, South Australia & Queensland.
- Livestock specialists servicing ports, saleyards, feedlots & abattoirs.
- Fatigue Management Accredited, VLLS, Mass & Maintenance accredited & COR compliant.
- Owners Wade & Anna Hannasky are lifetime Echuca locals & take pride in providing a professional service to their clients.



Wade  
0408 505 233

[www.hannaskylivestock.com.au](http://www.hannaskylivestock.com.au)

Anna  
0419 663 596



**Nutrien Livestock.**  
Your Breeding Stock  
Specialists.

**Nutrien**  
Ag Solutions®

**TRENT STORM** 0428 262 991  
**TIM WOODHAM** 0436 015 115



**Browns Stockfeed is your "Your one stop shop!"**

For all your stockfeed supplies, general hardware & rural merchandise

Browns Stockfeed now operates from **4 locations** across Victoria; manufacturing grain mixes at our mills in Leongatha and Tinamba; selling rural merchandise through our retail division in Leongatha; and now manufacturing our own pellet range from our newly acquired pellet mill in Colbinabbin.

**OUR SERVICES**

**Whole/Grain Mixes**

Browns manufacture our own standard range of mixes including calf, heifer and dairy grain mixes from our mills in Leongatha and Tinamba.

**Custom Rations**

Browns Sales and Nutritional Team can work closely with you to ensure a custom ration is designed to meet your specific livestock requirements.

**Pellets**

A recent pellet mill acquisition in Colbinabbin enables Browns to manufacture their own pellet range including dairy, lamb, beef and calf.

**Nutritionists**

Our Nutritional team is available for on farm consultations or over the phone advice. contact our team directly or phone the office to arrange a farm visit.

**Grain Buyers**

Browns Stockfeed source quality grain from grower's through-out Victoria and Southern NSW. With our large transport fleet we are able arrange pick up ex-farm and direct delivery to our clients.

**Rural Retail Store**

The Leongatha Rural Store stocks a large range of animal health products, pet and stock feeds in 20kg and bulka bags, fencing supplies and general hardware. Our Tinamba store specializes in bagged feeds in 20kg, 400kg & 800kg along with a small range of general farming products.

**SALES/  
NUTRITIONISTS**

MATT JAMES



0488 623 159

CHRISTINE LAWTON



0439 959 899

RICK HARBOUR



0428 361 231



**LEONGATHA** 86 Yarragon Rd  
03 5662 3199

**TINAMBA** 620 Heyfield Upper Maffra Rd  
03 5145 1345

**COLBINABBIN** 14 Station Street  
03 5432 9295



[www.brownsstockfeed.com.au](http://www.brownsstockfeed.com.au)



[bstmechandise.online](http://bstmechandise.online)



Browns Stockfeed



# BRINGING YOUR NEW BULL HOME

WHEN PURCHASING A BULL, CARE AND HANDLING AFTER THE SALE CAN BE AS IMPORTANT AS THE PURCHASE ITSELF. LOOKING AFTER YOUR BULL WELL DURING THE INITIAL STAGES OF HIS WORKING LIFE MAY ENSURE LONGEVITY AND SUCCESS WITHIN YOUR BREEDING HERD.

## PURCHASE

Temperament is an important characteristic when selecting a bull. Selecting a bull that may be flighty or aggressive will make life difficult for you each time he is handled. Note which bulls continually push to the centre of a mob, run around, or are unreasonably nervous, aggressive or excited.

At the sale, note any changes of temperament by individual bulls. Some bulls that are quiet in the yard or paddock may not like the pressure and noise of the auction and become excited. Others that were excited beforehand get much worse in the sale ring and can really perform. Use the yard or paddock behaviour as a guide, rather than the temperament shown in the ring.

## DELIVERY

When transporting your new bull insurance against loss in transit, accidental loss of use, or infertility, is sometimes provided by vendors. Where it is not, it is worth considering. After purchase tips:

- When purchasing, ask which health treatments he has received.
- Treat and handle him quietly at all times - no dogs, no buzzers. Talk to him and give him time and room to make up his mind.
- With more than one bull from different origins, you must be able to separate them on the truck.
- Make sure that the truck floor is covered to prevent bulls from slipping. Sand, sawdust or a floor grid will prevent bulls from being damaged by going down in transit.
- If you can arrange it, put a few quiet cows or steers on the truck with the bull. Let them down into a yard with the bulls for a while before loading and after unloading.
- Unload and reload during the trip as little as possible. If necessary, rest with water and feed. Treat bulls kindly your impatience or nervousness is easily transmitted to an animal unfamiliar to you and unsure of his environment.

## IF YOU USE A PROFESSIONAL CARRIER:

- Make sure the carrier knows which bulls can be mixed together.

- Discuss with the carrier, resting procedures for long trips, expected delivery time, truck condition and quiet handling.
- Give ear tag and brand numbers to the carrier and make sure you have the carrier's phone number.
- If buying bulls from interstate, organise any necessary health tests before leaving and work out if any other requirements must be met before cattle can come into another State.

When buying bulls from far away, you may often have to fit in with other delivery arrangements to reduce cost. You should make it clear how you want your bulls handled.

## ARRIVAL

When the bull or bulls arrive home, unload them at the yards into a group of house cows, steers or herd cows. Never jump them from the back of a truck directly into a paddock—it may be the last time you see them. Bulls from different origins should be put into separate yards with other cattle for company.

Provide hay and water, then leave them alone until the next morning.

The next day, bulls should receive routine health treatments. If they have not been treated before, all bulls should be vaccinated with:

- 5-in-1 vaccine;
- vibriosis vaccine;
- leptospirosis vaccine (if in areas like the Hunter where leptospirosis exists);
- three-day sickness vaccine (if in areas where this sickness can cause problems).

Give particular attention to preventing new bulls bringing vibriosis into a herd. Vibriosis, a sexually transmitted disease, causes infertility and abortions and is most commonly introduced to a clean herd by an infected bull. These bulls show no signs of the illness. Vaccinated bulls are free from vibriosis, so vaccinating bulls against the disease should be a routine practice.

Vaccination involves two injections, 4–6 weeks apart, at the time of introduction, and then a booster shot every year. Complete the vaccinations 4 weeks before joining.

PURCHASE

DELIVERY

AFTER PURCHASE TIPS

ARRIVAL

MATING NEW YOUNG BULLS

MANAGING OLDER HERD BULL

DURING MATING

NORTHERN AUSTRALIA



# BRINGING YOUR NEW BULL HOME

Consult with your veterinarian and draw up a policy for treating bulls on arrival and then annually. Bulls should be drenched to prevent introducing worms and, if necessary, should be treated for lice.

Plan to give follow-up vaccinations 4–6 weeks later. Leave the bulls in the yards for the next day or two on feed and water to allow them to settle down with other stock for company. A bull's behaviour will decide how quickly he can be moved out to paddocks.

## MATING NEW YOUNG BULLS

Newly purchased young bulls should not be placed with older herd bulls for multiple-sire joining. The older, dominant bull will not allow the young bulls to work, and will knock them around while keeping them away from the cows.

Use new bulls in either single-sire groups or with young bulls their own age. If a number of young bulls are to be used together, run them together for a few weeks before joining starts. They sort out their pecking order quickly and have few problems later.

When the young bulls are working, inspect them regularly and closely.

## MATING NEW YOUNG BULLS

Older working bulls also need special care and attention before mating starts. They should be tested or checked every year for physical soundness, testicle tone, and serving capacity or ability.

All bulls to be used must be free-moving, active and in good condition. Working bulls may need supplementary feeding before the joining season to bring up condition.

## DURING MATING

- Check bulls at least twice each week for the first 2 months. Get up close to them and watch each bull walk; check for swellings around the sheath and for lameness.
- Have a spare bull or bulls available to replace any that break down. Replace any suspect bull immediately.
- Rotate bulls in single-sire groups to make sure that any bull infertility is covered. Single-sire joining works well but it has risks. The bulls must be checked regularly and carefully, or the bulls should be rotated every one or two cycles.

Bulls are a large investment for breeding herds and they have a major effect on herd fertility. A little time and attention to make sure they are fit, free from disease and actively working is well worthwhile.

## NORTHERN AUSTRALIA

Although the Angus breed originated in a cooler climate, they can adapt to subtropical regions with many straight-bred and cross bred producers finding success in Northern Australia. Some of the following information may also be helpful for new bulls located in more temperate climates.

## ADAPTATION

The key to Northern success for Angus is that cattle introduced from the Southern regions of Australia be allowed to adapt to their new environment before commencing their working life. If possible, a break of 3 months is advisable before you set your bull to work.

## PURCHASE IN COOLER MONTHS

Ensure your bulls are in good condition before they do commence their working life. The cooler months are an ideal time to purchase and introduce Angus cattle, allowing them plenty of time to acclimatise.

## CHANGE OF FEED SOURCE

When inducting Angus cattle into your herd consider their source of feed. Have you taken an animal which has been supplemented on grain straight to a dry pasture? Animals should be gradually changed over to their new feed to ensure they do not lose condition. This may involve using supplements which could include dry lick/urea blocks.

## MANAGING CATTLE TICKS

For ticky areas, bulls should be vaccinated prior to transport and given another booster afterwards. Remember males are more susceptible to ticks than females.

Information is provided by the Department of Primary Industries NSW. For further information visit the DPI web site: [www.dpi.nsw.gov.au](http://www.dpi.nsw.gov.au). or [www.angusaustralia.com.au](http://www.angusaustralia.com.au). Further reading - Buying Angus Bulls

**FOR FURTHER INFORMATION VISIT**  
[www.angusaustralia.com.au](http://www.angusaustralia.com.au)

Angus Australia Locked Bag 11, Armidale NSW 2350  
Phone: (02) 6772 3011 | Fax: (02) 6772 3095  
Email: [office@angusaustralia.com.au](mailto:office@angusaustralia.com.au)  
Website: [www.angusaustralia.com.au](http://www.angusaustralia.com.au)

[WWW.ANGUSAUSTRALIA.COM.AU](http://WWW.ANGUSAUSTRALIA.COM.AU)

[#ANGUSPREMIUM](https://twitter.com/ANGUSPREMIUM)

[#ANGUSBULLS](https://twitter.com/ANGUSBULLS)



# BUYERS INSTRUCTION SLIP

TRADING NAME: .....

POSTAL ADDRESS: .....

POSTCODE: .....

EMAIL: .....

PHONE: ..... MOBILE: .....

AGENT: .....

LOTS PURCHASED: .....

## DELIVERY INSTRUCTIONS:

(Please ensure adequate time is allowed to organise appropriate yarding and safe transport of your purchase)

.....  
.....  
.....  
.....  
.....  
.....

## INSURANCE:

YES: ..... NO: .....

PERIOD: .....

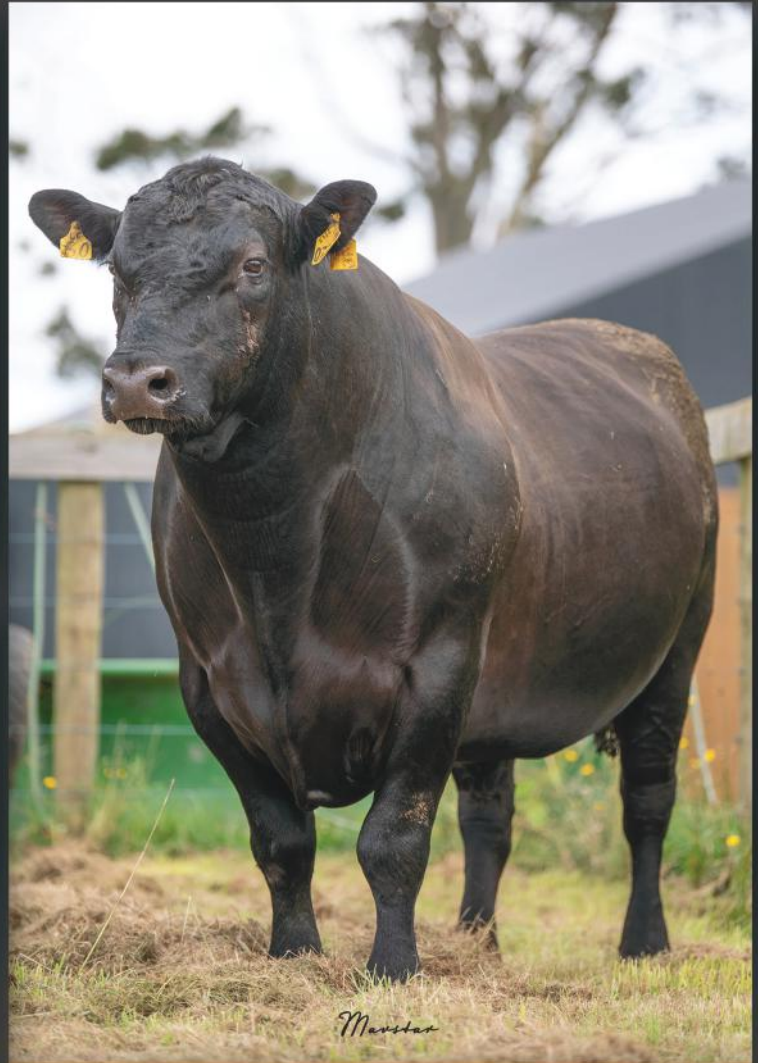
BUYER SIGNATURE (or AGENT NAME/SIGNATURE)

.....

**TO ENSURE PROMPT AND SAFE DELIVERY OF YOUR PURCHASE,  
PLEASE COMPLETE THE ABOVE. VERBAL INSTRUCTION WILL NOT BE ACCEPTED.**



LANDFALL NEW GROUND N90



LANDFALL Q750



LANDFALL Q543



MILWILLAH RIMFIRE R1023

EXCELLENCE IN GENETICS

**AA** ABSOLUTE  
ANGUS

[ABSOLUTEANGUS.COM.AU](http://ABSOLUTEANGUS.COM.AU)